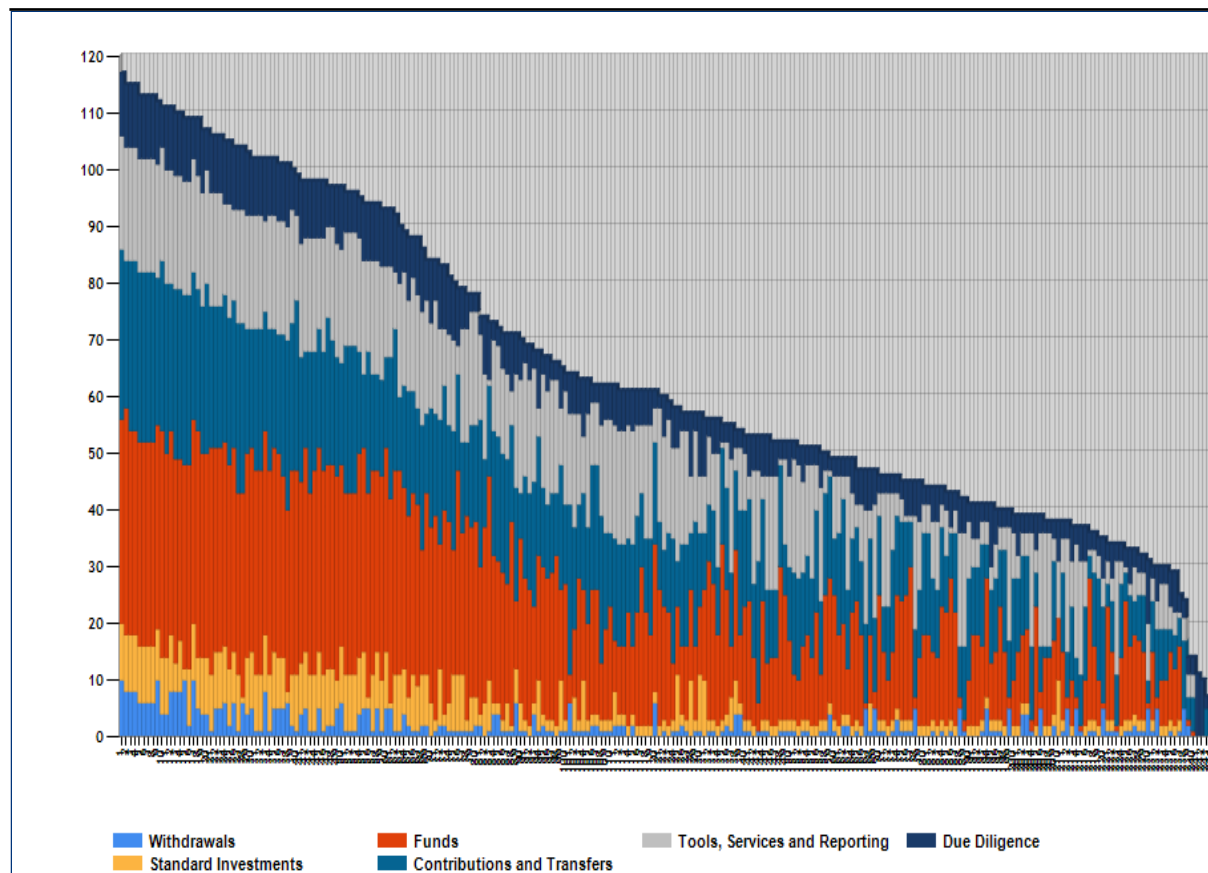


## Investment ISA DNA Graph Report



Id:	Provider Name:	Product Name:
1	Quilter	ISA
2	Aviva	Aviva ISA Portfolio
3	Fundment	Fundment Stocks & Shares ISA
4	Fusion Wealth	Fusion Wealth ISA
5	LV=	ISA Portfolio
6	Scottish Widows	Platform Stocks & Shares ISA
7	SS&C Hubwise	Stocks & Shares ISA
8	Transact	Transact ISA
9	Nucleus	Nucleus Wrap ISA
10	7IM	7IM Platform Stocks & Shares ISA
11	M&G Wealth	M&G Wealth ISA
12	Morningstar Wealth Platform	ISA
13	Parmenion Capital Partners LLP	Parmenion Stocks & Shares ISA
14	True Potential Investments	True Potential ISA
15	abrdrn	Elevate ISA
16	abrdrn	Wrap Junior ISA
17	Aegon	Aegon ISA
18	P1 Investment Management	P1 ISA
19	AJ Bell Investcentre	AJ Bell Investcentre ISA
20	Fidelity Adviser Solutions	ISA
21	Fundment	Fundment Stocks & Shares Junior ISA
22	Fusion Wealth	Fusion Wealth Junior ISA
23	M&G Wealth	M&G Wealth Junior ISA
24	Bestinvest	Bestinvest Stocks & Shares ISA

25	James Brearley	ISA
26	Barclays	Smart Investor Investment ISA
27	KILLIK & Co	Killik & Co Stocks & Shares ISA
28	Wealthtime Classic	Wealthtime Classic ISA
29	Willis Owen	Willis Owen ISA
30	7IM	7IM Platform Stocks & Shares JISA
31	AJ Bell Investcentre	AJ Bell Investcentre Junior ISA
32	Morningstar Wealth Platform	JISA
33	P1 Investment Management	P1 Junior ISA
34	Quilter	Junior ISA
35	Raymond James Investment Services	RJIS Stocks & Shares ISA
36	abrdn	FundZone S&S ISA
37	Nucleus	Nucleus Wrap Junior ISA
38	True Potential Investments	True Potential Junior ISA
39	Hargreaves Lansdown	HL Stocks & Shares ISA
40	Interactive Investor	ISA
41	Aviva	Aviva Stocks & Shares ISA
42	Fidelity Adviser Solutions	Junior ISA
43	James Brearley	Junior ISA
44	Scottish Widows	Platform Stocks & Shares JISA
45	SS&C Hubwise	Stocks & Shares Junior ISA
46	Transact	Transact Junior ISA
47	James Hay Partnership	James Hay Modular ISA
48	James Hay Partnership	James Hay Wrap ISA
49	Marlborough Select Platform Ltd	Select Stocks & Shares ISA
50	Parmenion Capital Partners LLP	Parmenion Stocks & Shares Junior ISA
51	Bank of Scotland	Self Select Stocks & Shares ISA
52	Halifax	Self Select Stocks & Shares ISA
53	Lloyds Bank	Share Dealing ISA
54	AJ Bell	AJ Bell Investment ISA
55	Aegon	Aegon Junior ISA
56	AJ Bell	AJ Bell Junior ISA
57	Aviva	Aviva Junior ISA Portfolio
58	Marlborough Select Platform Ltd	Select Stocks & Shares Junior ISA
59	Hargreaves Lansdown	HL Junior ISA
60	Raymond James Investment Services	RJIS Junior ISA
61	Wealthtime Classic	Wealthtime Classic Junior ISA
62	Interactive Investor	Junior ISA
63	Willis Owen	Willis Owen Junior ISA
64	Fidelity Personal Investing	Stocks & Shares ISA
65	Fidelity Personal Investing	Stocks & Shares Junior ISA
66	IWeb	Self Select Stocks & Shares ISA
67	Pilling & Co Stockbrokers Ltd	Pilling Stocks & Shares ISA
68	Jarvis Investment Management	shareDeal active ISA
69	Aviva	Aviva My Money S&S ISA
70	NatWest Cushon	Cushon ISA
71	Vanguard Asset Management	Vanguard ISA
72	Chelsea Financial Services	Chelsea FundStore Build your own ISA
73	Redmayne Bentley	Redmayne-Bentley Stocks & Shares ISA
74	Pilling & Co Stockbrokers Ltd	Pilling Stocks & Shares Junior ISA Execution Only
75	Redmayne Bentley	Redmayne-Bentley Junior ISA
76	Bestinvest	Bestinvest Stocks & Shares Junior ISA
77	CMC Invest	CMC Invest Stocks & Shares ISA

78	AJ Bell Dodl	Dodl Investment ISA
79	NatWest Cushon	Cushon Junior ISA
80	Wealth at Work Limited	My Wealth ISA
81	M&G Securities Ltd	M&G Stocks & Shares ISA
82	Vanguard Asset Management	Vanguard Junior ISA
83	Invesco	Stocks & Shares ISA
84	KILLIK & Co	Killik & Co Junior Stocks & Shares ISA
85	NFU Mutual	Select ISA
86	Chelsea Financial Services	Chelsea FundStore Junior ISA
87	Close Asset Management Ltd	Close Stocks & Shares ISA
88	InvestEngine (UK) Limited	InvestEngine ISA
89	M&G Securities Ltd	M&G Stocks and Shares Junior ISA
90	Chip	Stocks & Shares ISA
91	Scottish Friendly	My Choice (ISA)
92	The Children's ISA Limited	Children's ISA Ethical Option
93	Jarvis Investment Management	shareDeal active Junior ISA
94	Prudential	Prudential ISA
95	Legal & General	Stocks and Shares ISA
96	Scottish Friendly	My Select Junior ISA
97	Legal & General (Portfolio Mgt Services)	Workplace ISA
98	Plum	Plum ISA
99	Jarvis Investment Management	X-O.CO.UK ISA
100	Quilter Cheviot	Quilter Cheviot Ltd ISA
101	Scottish Friendly	My Ethical Choice ISA
102	Trading 212	Trading 212 ISA
103	Jarvis Investment Management	X-O.CO.UK Junior ISA
104	NFU Mutual	Select Junior ISA
105	The Children's ISA Limited	Children's ISA Actively Managed Option
106	Beanstalk	Beanstalk Junior ISA
107	Columbia Threadneedle Investments	CT ISA (Investment Trust)
108	Investec Wealth & Investment (UK)	Investec AIM Portfolio IHT Plan ISA
109	Jupiter Asset Management	Jupiter ISA
110	Ninety One	Ninety One ISA
111	The Children's ISA Limited	Children's ISA Low Cost Option
112	Bank of Scotland	Bank of Scotland Ready Made Investments ISA
113	Columbia Threadneedle Investments	CT ISA (Unit Trust/OEIC)
114	Forester Life Ltd	Stakeholder Junior ISA
115	Halifax	Halifax Ready Made Investments ISA
116	Lloyds Bank	Lloyds Bank Ready Made Investment ISA
117	Pilling & Co Stockbrokers Ltd	Pilling Stocks & Shares Junior ISA Managed
118	Red Rose Friendly Society	Junior Shariah ISA
119	Scottish Friendly	My Ethical Select Junior ISA
120	The Children's ISA Limited	Children's ISA Shariah Option
121	Beanstalk	Beanstalk ISA
122	Monzo	Investments ISA
123	Forester Life Ltd	Stakeholder ISA
124	Freetrade	Investment ISA
125	Stellar Asset Management Ltd	Stellar AIM IHT Service
126	Artemis Fund Managers Ltd	Artemis ISA
127	Charles Stanley & Co Ltd	Charles Stanley Direct ISA
128	IG Trading and Investments Ltd	Stocks & Shares ISA
129	Virgin Money	Virgin Money Stocks and Shares ISA
130	Wesleyan Unit Trust Mgrs Ltd	Wesleyan Unit Trust ISA

131	Charles Stanley & Co Ltd	Charles Stanley Direct Junior ISA
132	OneFamily	OneFamily Junior ISA
133	Post Office Money	Post Office Junior ISA
134	Red Rose Friendly Society	Shariah ISA
135	Columbia Threadneedle Investments	CT Junior ISA (Investment Trust)
136	Premier Miton Investors	Premier Miton ISA
137	Waystone Management (UK) Limited	ISA
138	McInroy & Wood	Stocks & Shares ISA
139	Schroder UTs Ltd	Schroders Stocks & Shares ISA
140	EdenTree Investment Management Ltd	ISA
141	Forester Life Ltd	Shariah Junior ISA
142	Fundamental Asset Management	Fundamental AIM IHT ISA (Direct)
143	Quilter Cheviot	Quilter Cheviot Ltd Junior ISA
144	Triodos Bank	Stocks & Shares ISA
145	Unicorn Asset Management	Unicorn ISA
146	BNY Mellon Fund Managers Ltd	Stocks & Shares ISA
147	Liontrust Asset Mgmt	Liontrust ISA
148	Margetts Fund Management Ltd	Margetts Junior ISA
149	NatWest	NatWest Invest Junior ISA
150	Royal Bank of Scotland	RBS Invest Junior ISA
151	Wesleyan Assurance Society	Wesleyan With Profits ISA
152	Forester Life Ltd	Shariah ISA
153	Fundsmith LLP	Fundsmith ISA
154	Margetts Fund Management Ltd	Margetts ISA
155	Scottish Friendly	My Easy Choice (ISA)
156	Wesleyan Unit Trust Mgrs Ltd	Wesleyan Unit Trust Junior ISA
157	AXA Investment Managers UK Ltd	AXA Stocks and Shares ISA
158	Shepherds Friendly Society	Shepherds Junior ISA
159	Fundsmith LLP	Fundsmith Junior ISA
160	Janus Henderson Investors	Henderson Investment Funds ISA
161	LV=	Stocks & Shares ISA
162	M&S Bank	Marks & Spencer Stocks and Shares ISA
163	Red Rose Friendly Society	ESG ISA
164	St. James's Place UT Group Ltd	St James Place ISA
165	Moneyfarm	DIY ISA
166	NuWealth	Stocks and Shares Junior ISA
167	Red Rose Friendly Society	Junior ESG ISA
168	Unicorn Asset Management	Unicorn JISA
169	Vanguard Asset Management	Vanguard Managed ISA
170	Forces Mutual	Scottish Friendly My Sovereign Investment ISA
171	FundRock Partners Limited	FP WHEB Asset Management ISA
172	OneFamily	OneFamily Stocks & Shares ISA
173	Orbis	Orbis Stocks & Shares ISA
174	WAY Fund Managers Ltd	WAY Stocks and Shares ISA
175	First Sentier Investors (UK) Funds Ltd	First Sentier Investors Stocks and Shares ISA
176	Liontrust Asset Mgmt	Liontrust Junior ISA
177	St. James's Place UT Group Ltd	St James Place Junior ISA
178	Unity Mutual	Unity Mutual Flexible ISA
179	Wealthify Limited	Wealthify Junior ISA
180	FundRock Partners Limited	FP Octopus Investment Funds ISA
181	Healthy Investment	Healthy Investment Ethical ISA
182	Healthy Investment	Healthy Investment Ethical ISA -Adviser charging
183	Orbis	Orbis Junior Stocks & Shares ISA

184	Unity Mutual	Unity Mutual Junior ISA
185	FundRock Partners Limited	FP Foresight ISA
186	Sheffield Mutual Friendly Society	Sheffield Mutual Sustainable ISA
187	Waystone Management (UK) Limited	Junior ISA
188	Netwealth	Netwealth Junior ISA
189	Nutmeg	Nutmeg Junior ISA
190	ConBrio	ConBrio ISA
191	Fundamental Asset Management	Fundamental AIM IHT ISA (Platform)
192	Healthy Investment	Healthy With Profits Junior ISA
193	Healthy Investment	Healthy With Profits Junior ISA - Adviser charging
194	Shepherds Friendly Society	Shepherds Stocks and Shares ISA
195	UBS	UBS ISA
196	Investment Fund Services Ltd	IFSL ISA
197	McInroy & Wood	Stocks & Shares Junior ISA
198	Nutmeg	Nutmeg Stocks & Shares ISA
199	SVM Asset Management Ltd	SVM ISA
200	ConBrio	ConBrio JISA
201	FundRock Partners Limited	FP Apollo ISA
202	FundRock Partners Limited	FP Volare ISA
203	Investment Fund Services Ltd	IFSL Junior ISA
204	Netwealth	Netwealth ISA
205	NuWealth	Stocks and Shares ISA
206	Sheffield Mutual Friendly Society	Sheffield Mutual Investment ISA
207	Allianz Global Investors	Stocks & Shares ISA
208	NatWest	NatWest Invest ISA
209	Puma Investments	Puma AIM IHT ISA
210	Royal Bank of Scotland	RBS Invest ISA
211	Saxo Capital Markets UK Limited	Saxo ISA
212	Wahed Invest	Wahed Invest ISA
213	Metfriendly	Metfriendly Junior ISA
214	Moneybox	Moneybox Junior ISA
215	Sheffield Mutual Friendly Society	Sheffield Mutual Investment Junior ISA
216	Wealthify Limited	Wealthify Investment ISA
217	FundRock Partners Limited	FP Russell ISA
218	Sarasin Investment Funds Ltd	Sarasin ISA
219	Moneyfarm	Managed ISA
220	NFU Mutual	Shrewd Savings Plan ISA
221	FundRock Partners Limited	FP Pictet Stocks & Shares ISA
222	Moneybox	Moneybox ISA
223	Rathbone Asset Management Limited	Rathbone Greenbank Multi-Asset Portfolios ISA
224	Slater Investments Limited	Slater Stocks & Shares Junior ISA
225	Artemis Fund Managers Ltd	Artemis Junior ISA
226	Octopus Investments	Octopus AIM Inheritance Tax ISA
227	Rathbone Asset Management Limited	Rathbone Single Strategy Fund ISA
228	Apex Fundrock Ltd	MI Funds ISA
229	Slater Investments Limited	Slater Stocks & Shares ISA
230	IG Trading and Investments Ltd	Smart Portfolio ISA
231	Metfriendly	Metfriendly Lump Sum ISA
232	Metfriendly	Metfriendly Monthly Savings ISA
233	Moneyfarm	Stocks & Shares Junior ISA
234	Valu-Trac Investment Management Ltd	VT Sinfonia OEIC ISA
235	Downing	Downing AIM ISA
236	Valu-Trac Investment Management Ltd	VT Sinfonia OEIC JISA

237	Rathbone Asset Management Limited	Rathbone Multi Asset Portfolio ISA
238	TIME Investments	TIME Investments AIM IHT ISA
239	Blackfinch Investments	Adapt AIM ISA Portfolios
240	Unicorn Asset Management	Unicorn AIM IHT ISA Portfolio Service
241	Credo	Credo ISA
242	Platform One	Platform One Stocks & Shares Junior ISA
243	BlackRock	BlackRock NISA
244	Platform One	Platform One Stocks & Shares ISA
245	Rathbones Investment Management	ISA

**DNA Graph Export : 02/01/2025 08:51:56**

	ISA Quilter	Aviva ISA Portfolio Aviva	Fundment Stocks & Shares ISA Fundment	Fusion Wealth ISA Fusion Wealth
Junior ISA	1	1	1	1
Platform/Self Select ISA	5	5	5	5
Flexible ISA	5	5	5	5
Online Applications	5	5	5	5
Online Valuations	5	5	5	5
Online Contribution History	5	5	5	5
Online Transaction History	5	5	5	5
Regular Premiums	5	5	5	5
Additional Permitted Subscriptions	5	5	5	5
APS Transfers In Allowed	5	5	5	5
Phased Investment Option	5	1	5	5
Bed and ISA	5	5	5	5
Transfers In From Child Trust Funds	0	0	0	0
In-Specie Transfers	5	5	5	5
Number of Funds	5	5	5	5
External Funds	5	5	5	5
Life Funds	1	5	1	1
Passive/Index Funds	5	5	5	5
Ethical Funds	5	5	5	5
ESG Funds	5	5	5	5
Unit Trusts/OEICs	5	5	5	5
Funds Non-UK	5	5	5	5
ETFs Available	5	5	5	5
Investment Trusts	5	5	5	5
Income Options Available	5	3	3	3
Auto Portfolio Rebalancing	5	5	5	5
<b>Total</b>	<b>117</b>	<b>115</b>	<b>115</b>	<b>115</b>
	ISA Portfolio LV=	Platform Stocks & Shares ISA Scottish Widows	Stocks & Shares ISA SS&C Hubwise	Transact ISA Transact
Junior ISA	1	1	1	1
Platform/Self Select ISA	5	5	5	5
Flexible ISA	5	5	5	5
Online Applications	5	5	5	5
Online Valuations	5	5	5	5
Online Contribution History	5	5	5	5
Online Transaction History	5	5	5	5
Regular Premiums	5	5	5	5
Additional Permitted Subscriptions	5	5	5	5
APS Transfers In Allowed	5	5	5	5
Phased Investment Option	5	5	5	5

Bed and ISA	5	5	5	5
Transfers In From Child Trust Funds	0	0	0	0
In-Specie Transfers	5	5	5	5
Number of Funds	5	5	5	5
External Funds	5	5	5	5
Life Funds	1	1	1	1
Passive/Index Funds	5	5	5	5
Ethical Funds	5	5	5	5
ESG Funds	5	5	5	5
Unit Trusts/OEICs	5	5	5	5
Funds Non-UK	5	5	5	5
ETFs Available	5	5	5	5
Investment Trusts	5	5	5	5
Income Options Available	1	1	5	5
Auto Portfolio Rebalancing	5	5	1	1
<b>Total</b>	<b>113</b>	<b>113</b>	<b>113</b>	<b>113</b>
	<b>Nucleus Wrap ISA Nucleus</b>	<b>7IM Platform Stocks &amp; Shares ISA 7IM</b>	<b>M&amp;G Wealth ISA M&amp;G Wealth</b>	<b>ISA Morningstar Wealth Platform</b>
Junior ISA	1	1	1	1
Platform/Self Select ISA	5	5	5	5
Flexible ISA	5	5	1	5
Online Applications	5	5	5	5
Online Valuations	5	5	5	5
Online Contribution History	5	5	5	5
Online Transaction History	5	5	5	5
Regular Premiums	5	5	5	5
Additional Permitted Subscriptions	5	5	5	5
APS Transfers In Allowed	5	5	5	5
Phased Investment Option	1	5	5	1
Bed and ISA	5	5	5	5
Transfers In From Child Trust Funds	0	0	0	0
In-Specie Transfers	5	5	5	5
Number of Funds	5	5	5	5
External Funds	5	5	5	5
Life Funds	1	1	5	1
Passive/Index Funds	5	5	5	5
Ethical Funds	5	5	5	5
ESG Funds	5	5	5	5
Unit Trusts/OEICs	5	5	5	5
Funds Non-UK	5	5	5	5
ETFs Available	4	5	5	5
Investment Trusts	5	5	5	5
Income Options Available	5	3	3	3
Auto Portfolio Rebalancing	5	1	1	5
<b>Total</b>	<b>112</b>	<b>111</b>	<b>111</b>	<b>111</b>
	<b>Parmenion Stocks &amp; Shares ISA</b>	<b>True Potential ISA True Potential</b>	<b>Elevate ISA abrdn</b>	<b>Wrap Junior ISA abrdn</b>



	Parmenion Capital Partners LLP	Investments		
Junior ISA	1	1	1	5
Platform/Self Select ISA	5	5	5	5
Flexible ISA	5	5	1	0
Online Applications	5	5	5	5
Online Valuations	5	5	5	5
Online Contribution History	5	5	5	5
Online Transaction History	5	5	5	5
Regular Premiums	5	5	5	5
Additional Permitted Subscriptions	5	5	5	0
APS Transfers In Allowed	5	5	5	0
Phased Investment Option	5	5	5	5
Bed and ISA	5	5	1	5
Transfers In From Child Trust Funds	0	0	0	5
In-Specie Transfers	5	5	5	5
Number of Funds	5	5	5	5
External Funds	5	5	5	5
Life Funds	1	1	1	5
Passive/Index Funds	5	5	5	5
Ethical Funds	5	5	5	5
ESG Funds	5	5	5	5
Unit Trusts/OEICs	5	5	5	5
Funds Non-UK	5	1	5	5
ETFs Available	4	4	5	4
Investment Trusts	1	5	5	5
Income Options Available	3	3	5	0
Auto Portfolio Rebalancing	5	5	5	5
<b>Total</b>	<b>110</b>	<b>110</b>	<b>109</b>	<b>109</b>
	Aegon ISA Aegon	P1 ISA P1 Investment Management	AJ Bell Investcentre ISA AJ Bell Investcentre	ISA Fidelity Adviser Solutions
Junior ISA	1	1	1	1
Platform/Self Select ISA	5	5	5	5
Flexible ISA	5	5	5	1
Online Applications	5	5	5	5
Online Valuations	5	5	5	5
Online Contribution History	5	5	5	5
Online Transaction History	5	5	5	5
Regular Premiums	5	5	5	5
Additional Permitted Subscriptions	5	5	5	5
APS Transfers In Allowed	5	5	1	5
Phased Investment Option	5	5	5	5
Bed and ISA	5	5	5	5
Transfers In From Child Trust Funds	0	0	0	0
In-Specie Transfers	5	5	5	5

Number of Funds	5	5	5	5
External Funds	5	5	5	5
Life Funds	1	1	1	1
Passive/Index Funds	5	5	5	5
Ethical Funds	5	5	5	5
ESG Funds	5	5	5	5
Unit Trusts/OEICs	5	5	5	5
Funds Non-UK	5	5	5	5
ETFs Available	1	5	5	5
Investment Trusts	1	5	5	5
Income Options Available	5	1	3	3
Auto Portfolio Rebalancing	5	1	1	1
<b>Total</b>	<b>109</b>	<b>109</b>	<b>107</b>	<b>107</b>
	<b>Fundment Stocks &amp; Shares Junior ISA Fundment</b>	<b>Fusion Wealth Junior ISA Fusion Wealth</b>	<b>M&amp;G Wealth Junior ISA M&amp;G Wealth</b>	<b>Bestinvest Stocks &amp; Shares ISA Bestinvest</b>
Junior ISA	5	5	5	1
Platform/Self Select ISA	5	5	5	5
Flexible ISA	0	0	0	5
Online Applications	5	5	5	5
Online Valuations	5	5	5	5
Online Contribution History	5	5	5	5
Online Transaction History	5	5	5	5
Regular Premiums	5	5	5	5
Additional Permitted Subscriptions	0	0	0	5
APS Transfers In Allowed	0	0	0	5
Phased Investment Option	5	5	5	1
Bed and ISA	5	5	5	5
Transfers In From Child Trust Funds	5	5	5	0
In-Specie Transfers	5	5	5	5
Number of Funds	5	5	5	5
External Funds	5	5	5	5
Life Funds	1	1	5	1
Passive/Index Funds	5	5	5	5
Ethical Funds	5	5	5	5
ESG Funds	5	5	5	5
Unit Trusts/OEICs	5	5	5	5
Funds Non-UK	5	5	5	5
ETFs Available	5	5	5	5
Investment Trusts	5	5	5	5
Income Options Available	0	0	0	1
Auto Portfolio Rebalancing	5	5	1	1
<b>Total</b>	<b>106</b>	<b>106</b>	<b>106</b>	<b>105</b>
	<b>ISA James Brearley</b>	<b>Smart Investor Investment ISA Barclays</b>	<b>Killik &amp; Co Stocks &amp; Shares ISA KILLIK &amp; Co</b>	<b>Wealthtime Classic ISA Wealthtime Classic</b>
Junior ISA	1	1	1	1
Platform/Self Select ISA	5	5	5	5
Flexible ISA	5	5	5	5

Online Applications	1	5	1	5
Online Valuations	5	5	5	5
Online Contribution History	5	5	5	5
Online Transaction History	5	5	5	5
Regular Premiums	5	5	5	5
Additional Permitted Subscriptions	5	5	5	5
APS Transfers In Allowed	5	5	5	5
Phased Investment Option	1	5	1	5
Bed and ISA	5	5	5	5
Transfers In From Child Trust Funds	0	0	0	0
In-Specie Transfers	5	5	5	5
Number of Funds	5	5	5	5
External Funds	5	5	5	5
Life Funds	1	1	1	1
Passive/Index Funds	5	5	5	5
Ethical Funds	5	5	5	5
ESG Funds	5	5	5	5
Unit Trusts/OEICs	5	5	5	5
Funds Non-UK	5	1	5	5
ETFs Available	5	5	4	0
Investment Trusts	5	5	5	1
Income Options Available	1	0	5	1
Auto Portfolio Rebalancing	5	1	1	5
<b>Total</b>	<b>105</b>	<b>104</b>	<b>104</b>	<b>104</b>
	<b>Willis Owen ISA Willis Owen</b>	<b>7IM Platform Stocks &amp; Shares JISA 7IM</b>	<b>AJ Bell Investcentre Junior ISA AJ Bell Investcentre</b>	<b>JISA Morningstar Wealth Platform</b>
Junior ISA	1	5	5	5
Platform/Self Select ISA	5	5	5	5
Flexible ISA	5	0	0	0
Online Applications	5	5	5	5
Online Valuations	5	5	5	5
Online Contribution History	5	5	5	5
Online Transaction History	5	5	5	5
Regular Premiums	5	5	5	5
Additional Permitted Subscriptions	5	0	0	0
APS Transfers In Allowed	5	0	0	0
Phased Investment Option	1	5	5	1
Bed and ISA	1	5	5	5
Transfers In From Child Trust Funds	0	5	5	5
In-Specie Transfers	5	5	5	5
Number of Funds	5	5	5	5
External Funds	5	5	5	5
Life Funds	1	1	1	1
Passive/Index Funds	5	5	5	5
Ethical Funds	5	5	5	5

ESG Funds	5	5	5	5
Unit Trusts/OEICs	5	5	5	5
Funds Non-UK	5	5	5	5
ETFs Available	5	5	5	5
Investment Trusts	5	5	5	5
Income Options Available	3	0	0	0
Auto Portfolio Rebalancing	1	1	1	5
<b>Total</b>	<b>103</b>	<b>102</b>	<b>102</b>	<b>102</b>
	<b>P1 Junior ISA P1 Investment Management</b>	<b>Junior ISA Quilter</b>	<b>RJIS Stocks &amp; Shares ISA Raymond James Investment Services</b>	<b>FundZone S&amp;S ISA abrdn</b>
Junior ISA	5	5	1	1
Platform/Self Select ISA	5	5	5	5
Flexible ISA	0	0	5	5
Online Applications	5	5	1	5
Online Valuations	5	5	5	5
Online Contribution History	5	5	5	5
Online Transaction History	5	5	5	5
Regular Premiums	5	5	0	5
Additional Permitted Subscriptions	0	0	5	5
APS Transfers In Allowed	0	0	5	5
Phased Investment Option	5	5	1	5
Bed and ISA	5	1	5	5
Transfers In From Child Trust Funds	5	5	0	0
In-Specie Transfers	5	5	5	5
Number of Funds	5	5	5	5
External Funds	5	5	5	5
Life Funds	1	1	1	1
Passive/Index Funds	5	5	5	5
Ethical Funds	5	5	5	5
ESG Funds	5	5	5	5
Unit Trusts/OEICs	5	5	5	5
Funds Non-UK	5	5	5	1
ETFs Available	5	5	5	1
Investment Trusts	5	5	5	1
Income Options Available	0	0	3	5
Auto Portfolio Rebalancing	1	5	5	1
<b>Total</b>	<b>102</b>	<b>102</b>	<b>102</b>	<b>101</b>
	<b>Nucleus Wrap Junior ISA Nucleus</b>	<b>True Potential Junior ISA True Potential Investments</b>	<b>HL Stocks &amp; Shares ISA Hargreaves Lansdown</b>	<b>ISA Interactive Investor</b>
Junior ISA	5	5	1	1
Platform/Self Select ISA	5	5	5	5
Flexible ISA	0	0	1	1
Online Applications	5	5	5	5
Online Valuations	5	5	5	5
Online Contribution History	5	5	5	0
Online Transaction History	5	5	5	5

Regular Premiums	5	5	5	5
Additional Permitted Subscriptions	0	0	5	5
APS Transfers In Allowed	0	0	5	5
Phased Investment Option	1	5	1	5
Bed and ISA	5	5	5	5
Transfers In From Child Trust Funds	5	5	0	0
In-Specie Transfers	5	5	5	5
Number of Funds	5	5	5	5
External Funds	5	5	5	5
Life Funds	1	1	1	1
Passive/Index Funds	5	5	5	5
Ethical Funds	5	5	5	5
ESG Funds	5	5	5	5
Unit Trusts/OEICs	5	5	5	5
Funds Non-UK	5	1	5	5
ETFs Available	4	4	4	5
Investment Trusts	5	5	5	5
Income Options Available	0	0	1	0
Auto Portfolio Rebalancing	5	5	1	1
<b>Total</b>	<b>101</b>	<b>101</b>	<b>100</b>	<b>99</b>
	<b>Aviva Stocks &amp; Shares ISA Aviva</b>	<b>Junior ISA Fidelity Adviser Solutions</b>	<b>Junior ISA James Brearley</b>	<b>Platform Stocks &amp; Shares JISA Scottish Widows</b>
Junior ISA	1	5	5	5
Platform/Self Select ISA	5	5	5	5
Flexible ISA	5	0	0	0
Online Applications	5	5	1	5
Online Valuations	5	5	5	5
Online Contribution History	5	5	5	5
Online Transaction History	5	5	5	5
Regular Premiums	5	5	5	5
Additional Permitted Subscriptions	5	0	0	0
APS Transfers In Allowed	5	0	0	0
Phased Investment Option	1	5	1	5
Bed and ISA	1	1	5	1
Transfers In From Child Trust Funds	0	5	5	1
In-Specie Transfers	5	5	5	5
Number of Funds	5	5	5	5
External Funds	5	5	5	5
Life Funds	1	1	1	1
Passive/Index Funds	5	5	5	5
Ethical Funds	5	5	5	5
ESG Funds	5	5	5	5
Unit Trusts/OEICs	5	5	5	5
Funds Non-UK	1	5	5	5
ETFs Available	4	5	5	5
Investment Trusts	5	5	5	5

Income Options Available	3	0	0	0
Auto Portfolio Rebalancing	1	1	5	5
<b>Total</b>	<b>98</b>	<b>98</b>	<b>98</b>	<b>98</b>
	<b>Stocks &amp; Shares Junior ISA SS&amp;C Hubwise</b>	<b>Transact Junior ISA Transact</b>	<b>James Hay Modular ISA James Hay Partnership</b>	<b>James Hay Wrap ISA James Hay Partnership</b>
Junior ISA	5	5	1	1
Platform/Self Select ISA	5	5	5	5
Flexible ISA	0	0	1	1
Online Applications	5	5	5	1
Online Valuations	5	5	5	5
Online Contribution History	5	5	5	5
Online Transaction History	5	5	5	5
Regular Premiums	5	5	5	5
Additional Permitted Subscriptions	0	0	5	5
APS Transfers In Allowed	0	0	5	5
Phased Investment Option	5	5	1	1
Bed and ISA	1	5	1	5
Transfers In From Child Trust Funds	5	5	0	0
In-Specie Transfers	5	5	5	5
Number of Funds	5	5	5	5
External Funds	5	5	5	5
Life Funds	1	1	1	1
Passive/Index Funds	5	5	5	5
Ethical Funds	5	5	5	5
ESG Funds	5	5	5	5
Unit Trusts/OEICs	5	5	5	5
Funds Non-UK	5	1	5	5
ETFs Available	5	5	5	5
Investment Trusts	5	5	5	5
Income Options Available	0	0	1	1
Auto Portfolio Rebalancing	1	1	1	1
<b>Total</b>	<b>98</b>	<b>98</b>	<b>97</b>	<b>97</b>
	<b>Select Stocks &amp; Shares ISA Marlborough Select Platform Ltd</b>	<b>Parmenion Stocks &amp; Shares Junior ISA Parmenion Capital Partners LLP</b>	<b>Self Select Stocks &amp; Shares ISA Bank of Scotland</b>	<b>Self Select Stocks &amp; Shares ISA Halifax</b>
Junior ISA	1	5	1	1
Platform/Self Select ISA	5	5	5	5
Flexible ISA	5	0	1	1
Online Applications	5	5	5	5
Online Valuations	5	5	5	5
Online Contribution History	5	5	5	5
Online Transaction History	5	5	5	5
Regular Premiums	5	5	5	5
Additional Permitted Subscriptions	5	0	5	5
APS Transfers In Allowed	1	0	5	5
Phased Investment Option	1	5	1	1

Bed and ISA	1	5	5	5
Transfers In From Child Trust Funds	0	1	0	0
In-Specie Transfers	5	5	5	5
Number of Funds	5	5	5	5
External Funds	5	5	5	5
Life Funds	1	1	1	1
Passive/Index Funds	5	5	5	5
Ethical Funds	5	5	5	5
ESG Funds	5	5	5	5
Unit Trusts/OEICs	5	5	5	5
Funds Non-UK	1	5	1	1
ETFs Available	5	4	5	5
Investment Trusts	5	1	5	5
Income Options Available	1	0	0	0
Auto Portfolio Rebalancing	5	5	1	1
<b>Total</b>	<b>97</b>	<b>97</b>	<b>96</b>	<b>96</b>
	<b>Share Dealing ISA Lloyds Bank</b>	<b>AJ Bell Investment ISA AJ Bell</b>	<b>Aegon Junior ISA Aegon</b>	<b>AJ Bell Junior ISA AJ Bell</b>
Junior ISA	1	1	5	5
Platform/Self Select ISA	5	5	5	5
Flexible ISA	1	1	0	0
Online Applications	5	5	1	5
Online Valuations	5	5	5	5
Online Contribution History	5	5	5	5
Online Transaction History	5	5	5	5
Regular Premiums	5	5	5	5
Additional Permitted Subscriptions	5	5	0	0
APS Transfers In Allowed	5	1	0	0
Phased Investment Option	1	1	5	1
Bed and ISA	5	1	5	1
Transfers In From Child Trust Funds	0	0	5	5
In-Specie Transfers	5	5	5	5
Number of Funds	5	5	5	5
External Funds	5	5	5	5
Life Funds	1	1	1	1
Passive/Index Funds	5	5	5	5
Ethical Funds	5	5	5	5
ESG Funds	5	5	5	5
Unit Trusts/OEICs	5	5	5	5
Funds Non-UK	1	5	5	5
ETFs Available	5	5	1	5
Investment Trusts	5	5	1	5
Income Options Available	0	3	0	0
Auto Portfolio Rebalancing	1	1	5	1
<b>Total</b>	<b>96</b>	<b>95</b>	<b>94</b>	<b>94</b>
	<b>Aviva Junior ISA Portfolio Aviva</b>	<b>Select Stocks &amp; Shares Junior ISA Marlborough Select</b>	<b>HL Junior ISA Hargreaves Lansdown</b>	<b>RJIS Junior ISA Raymond James Investment Services</b>

		Platform Ltd		
Junior ISA	5	5	5	5
Platform/Self Select ISA	5	5	5	5
Flexible ISA	0	0	0	0
Online Applications	5	5	5	1
Online Valuations	5	5	5	5
Online Contribution History	5	5	5	5
Online Transaction History	5	5	5	5
Regular Premiums	5	5	5	0
Additional Permitted Subscriptions	0	0	0	0
APS Transfers In Allowed	0	0	0	0
Phased Investment Option	1	1	1	1
Bed and ISA	1	1	1	5
Transfers In From Child Trust Funds	1	5	5	5
In-Specie Transfers	5	5	5	5
Number of Funds	5	5	5	5
External Funds	5	5	5	5
Life Funds	1	1	1	1
Passive/Index Funds	5	5	5	5
Ethical Funds	5	5	5	5
ESG Funds	5	5	5	5
Unit Trusts/OEICs	5	5	5	5
Funds Non-UK	5	1	5	5
ETFs Available	5	5	4	5
Investment Trusts	5	5	5	5
Income Options Available	0	0	0	0
Auto Portfolio Rebalancing	5	5	1	5
<b>Total</b>	<b>94</b>	<b>94</b>	<b>93</b>	<b>93</b>
	Wealthtime Classic Junior ISA Wealthtime Classic	Junior ISA Interactive Investor	Willis Owen Junior ISA Willis Owen	Stocks & Shares ISA Fidelity Personal Investing
Junior ISA	5	5	5	1
Platform/Self Select ISA	5	5	5	5
Flexible ISA	0	0	0	1
Online Applications	1	5	5	5
Online Valuations	5	5	5	5
Online Contribution History	5	0	5	5
Online Transaction History	5	0	5	5
Regular Premiums	5	5	5	5
Additional Permitted Subscriptions	0	0	0	1
APS Transfers In Allowed	0	0	0	1
Phased Investment Option	5	5	1	5
Bed and ISA	5	5	1	5
Transfers In From Child Trust Funds	5	5	1	0
In-Specie Transfers	5	5	5	1
Number of Funds	5	5	5	5



External Funds	5	5	5	5
Life Funds	1	1	1	1
Passive/Index Funds	5	5	5	5
Ethical Funds	5	5	5	5
ESG Funds	5	5	5	5
Unit Trusts/OEICs	5	5	5	5
Funds Non-UK	5	5	5	1
ETFs Available	0	5	5	3
Investment Trusts	1	5	5	5
Income Options Available	0	0	0	3
Auto Portfolio Rebalancing	5	1	1	1
<b>Total</b>	<b>93</b>	<b>92</b>	<b>90</b>	<b>89</b>
	<b>Stocks &amp; Shares Junior ISA</b> Fidelity Personal Investing	<b>Self Select Stocks &amp; Shares ISA</b> IWeb	<b>Pilling Stocks &amp; Shares ISA</b> Pilling & Co Stockbrokers Ltd	<b>shareDeal active ISA</b> Jarvis Investment Management
Junior ISA	5	1	1	1
Platform/Self Select ISA	5	5	5	5
Flexible ISA	0	1	5	5
Online Applications	5	5	1	5
Online Valuations	5	5	5	5
Online Contribution History	5	5	5	5
Online Transaction History	5	5	5	5
Regular Premiums	5	1	1	1
Additional Permitted Subscriptions	0	5	5	5
APS Transfers In Allowed	0	5	5	5
Phased Investment Option	5	1	1	1
Bed and ISA	5	1	5	5
Transfers In From Child Trust Funds	1	0	0	0
In-Specie Transfers	1	5	5	5
Number of Funds	5	5	5	5
External Funds	5	5	5	5
Life Funds	1	1	1	1
Passive/Index Funds	5	5	5	5
Ethical Funds	5	5	5	0
ESG Funds	5	5	5	0
Unit Trusts/OEICs	5	5	5	5
Funds Non-UK	1	1	1	1
ETFs Available	3	5	0	4
Investment Trusts	5	5	5	5
Income Options Available	0	0	1	1
Auto Portfolio Rebalancing	1	1	1	1
<b>Total</b>	<b>88</b>	<b>88</b>	<b>88</b>	<b>86</b>
	<b>Aviva My Money S&amp;S ISA</b> Aviva	<b>Cushon ISA</b> NatWest Cushon	<b>Vanguard ISA</b> Vanguard Asset Management	<b>Chelsea FundStore Build your own ISA</b> Chelsea Financial Services
Junior ISA	1	1	1	1
Platform/Self Select ISA	5	1	5	5
Flexible ISA	1	5	5	5
Online Applications	5	5	5	5

Online Valuations	5	5	5	5
Online Contribution History	5	5	0	0
Online Transaction History	5	5	5	0
Regular Premiums	5	5	5	5
Additional Permitted Subscriptions	1	5	5	5
APS Transfers In Allowed	1	5	5	5
Phased Investment Option	1	1	5	1
Bed and ISA	1	1	0	1
Transfers In From Child Trust Funds	0	0	0	0
In-Specie Transfers	5	1	1	5
Number of Funds	5	5	4	5
External Funds	5	5	1	5
Life Funds	1	1	1	1
Passive/Index Funds	5	5	5	5
Ethical Funds	5	5	5	5
ESG Funds	5	5	5	5
Unit Trusts/OEICs	5	5	5	5
Funds Non-UK	1	5	5	5
ETFs Available	4	1	5	1
Investment Trusts	5	1	1	1
Income Options Available	1	0	0	1
Auto Portfolio Rebalancing	1	1	0	1
<b>Total</b>	<b>84</b>	<b>84</b>	<b>84</b>	<b>83</b>
	<b>Redmayne-Bentley Stocks &amp; Shares ISA Redmayne Bentley</b>	<b>Pilling Stocks &amp; Shares Junior ISA Execution Only Pilling &amp; Co Stockbrokers Ltd</b>	<b>Redmayne-Bentley Junior ISA Redmayne Bentley</b>	<b>Bestinvest Stocks &amp; Shares Junior ISA Bestinvest</b>
Junior ISA	1	5	5	5
Platform/Self Select ISA	5	5	5	5
Flexible ISA	5	0	0	0
Online Applications	1	1	1	5
Online Valuations	5	5	5	0
Online Contribution History	5	5	5	0
Online Transaction History	5	5	5	0
Regular Premiums	1	5	5	5
Additional Permitted Subscriptions	5	0	0	0
APS Transfers In Allowed	5	0	0	0
Phased Investment Option	1	1	1	1
Bed and ISA	5	5	5	1
Transfers In From Child Trust Funds	0	5	5	5
In-Specie Transfers	5	1	5	5
Number of Funds	5	5	5	5
External Funds	5	5	5	5
Life Funds	1	1	1	1
Passive/Index Funds	5	5	5	5
Ethical Funds	0	5	0	5

ESG Funds	0	5	0	5
Unit Trusts/OEICs	5	5	5	5
Funds Non-UK	1	1	1	5
ETFs Available	5	0	5	5
Investment Trusts	5	5	5	5
Income Options Available	1	0	0	0
Auto Portfolio Rebalancing	1	1	1	1
<b>Total</b>	<b>83</b>	<b>81</b>	<b>80</b>	<b>79</b>
	<b>CMC Invest Stocks &amp; Shares ISA CMC Invest</b>	<b>Dodl Investment ISA AJ Bell Dodl</b>	<b>Cushon Junior ISA NatWest Cushon</b>	<b>My Wealth ISA Wealth at Work Limited</b>
Junior ISA	1	1	5	1
Platform/Self Select ISA	1	1	1	1
Flexible ISA	5	1	0	1
Online Applications	5	5	5	5
Online Valuations	5	5	5	5
Online Contribution History	5	5	5	5
Online Transaction History	5	5	5	5
Regular Premiums	1	5	5	5
Additional Permitted Subscriptions	5	5	0	5
APS Transfers In Allowed	5	0	0	5
Phased Investment Option	0	1	1	1
Bed and ISA	0	1	1	1
Transfers In From Child Trust Funds	0	0	5	0
In-Specie Transfers	5	5	1	1
Number of Funds	5	4	5	3
External Funds	5	5	5	5
Life Funds	0	1	1	1
Passive/Index Funds	0	5	5	5
Ethical Funds	5	5	5	5
ESG Funds	5	5	5	5
Unit Trusts/OEICs	5	5	5	5
Funds Non-UK	0	1	5	1
ETFs Available	5	4	1	5
Investment Trusts	5	1	1	1
Income Options Available	0	1	0	0
Auto Portfolio Rebalancing	1	1	1	1
<b>Total</b>	<b>79</b>	<b>78</b>	<b>78</b>	<b>78</b>
	<b>M&amp;G Stocks &amp; Shares ISA M&amp;G Securities Ltd</b>	<b>Vanguard Junior ISA Vanguard Asset Management</b>	<b>Stocks &amp; Shares ISA Invesco</b>	<b>Killik &amp; Co Junior Stocks &amp; Shares ISA KILLIK &amp; Co</b>
Junior ISA	1	5	1	5
Platform/Self Select ISA	1	5	1	5
Flexible ISA	1	0	1	0
Online Applications	5	5	1	1
Online Valuations	5	5	5	0
Online Contribution History	0	0	5	0
Online Transaction History	5	5	5	0

Regular Premiums	5	5	5	5
Additional Permitted Subscriptions	5	0	5	0
APS Transfers In Allowed	5	0	5	0
Phased Investment Option	1	5	1	1
Bed and ISA	5	0	1	5
Transfers In From Child Trust Funds	0	1	0	5
In-Specie Transfers	5	1	5	0
Number of Funds	3	4	3	5
External Funds	1	1	1	5
Life Funds	1	1	1	1
Passive/Index Funds	5	5	5	5
Ethical Funds	5	5	5	5
ESG Funds	5	5	5	5
Unit Trusts/OEICs	5	5	5	5
Funds Non-UK	1	5	1	5
ETFs Available	1	5	1	4
Investment Trusts	1	1	1	5
Income Options Available	1	0	3	0
Auto Portfolio Rebalancing	1	0	1	1
<b>Total</b>	<b>74</b>	<b>74</b>	<b>73</b>	<b>73</b>
	<b>Select ISA NFU Mutual</b>	<b>Chelsea FundStore Junior ISA Chelsea Financial Services</b>	<b>Close Stocks &amp; Shares ISA Close Asset Management Ltd</b>	<b>InvestEngine ISA InvestEngine (UK) Limited</b>
Junior ISA	1	5	1	1
Platform/Self Select ISA	1	5	5	5
Flexible ISA	1	0	1	1
Online Applications	1	1	5	5
Online Valuations	5	5	5	5
Online Contribution History	5	0	0	5
Online Transaction History	5	0	5	5
Regular Premiums	5	5	5	5
Additional Permitted Subscriptions	5	0	5	0
APS Transfers In Allowed	5	0	5	0
Phased Investment Option	1	1	1	5
Bed and ISA	1	1	1	5
Transfers In From Child Trust Funds	0	5	0	0
In-Specie Transfers	5	5	5	5
Number of Funds	2	5	0	5
External Funds	5	5	5	1
Life Funds	1	1	1	1
Passive/Index Funds	1	5	5	1
Ethical Funds	5	5	0	1
ESG Funds	5	5	0	1
Unit Trusts/OEICs	5	5	5	1
Funds Non-UK	1	5	5	1
ETFs Available	1	0	0	5
Investment Trusts	1	1	5	1

Income Options Available	3	0	0	1
Auto Portfolio Rebalancing	1	1	1	5
<b>Total</b>	<b>72</b>	<b>71</b>	<b>71</b>	<b>71</b>
	<b>M&amp;G Stocks and Shares Junior ISA</b> M&G Securities Ltd	<b>Stocks &amp; Shares ISA</b> Chip	<b>My Choice (ISA)</b> Scottish Friendly	<b>Children's ISA Ethical Option</b> The Children's ISA Limited
Junior ISA	5	1	1	5
Platform/Self Select ISA	1	1	1	1
Flexible ISA	0	5	1	0
Online Applications	5	5	5	5
Online Valuations	5	5	5	5
Online Contribution History	0	5	5	5
Online Transaction History	5	5	5	5
Regular Premiums	5	5	5	5
Additional Permitted Subscriptions	0	0	5	0
APS Transfers In Allowed	0	0	5	0
Phased Investment Option	1	1	1	1
Bed and ISA	5	1	1	1
Transfers In From Child Trust Funds	5	0	0	5
In-Specie Transfers	5	1	1	5
Number of Funds	3	2	2	1
External Funds	1	5	1	5
Life Funds	1	1	5	1
Passive/Index Funds	5	5	5	1
Ethical Funds	5	5	5	5
ESG Funds	5	5	5	5
Unit Trusts/OEICs	5	5	1	5
Funds Non-UK	1	1	1	1
ETFs Available	1	4	1	1
Investment Trusts	1	1	1	1
Income Options Available	0	0	0	0
Auto Portfolio Rebalancing	1	1	1	0
<b>Total</b>	<b>71</b>	<b>70</b>	<b>69</b>	<b>69</b>
	<b>shareDeal active Junior ISA</b> Jarvis Investment Management	<b>Prudential ISA</b> Prudential	<b>Stocks and Shares ISA</b> Legal & General	<b>My Select Junior ISA</b> Scottish Friendly
Junior ISA	5	1	1	5
Platform/Self Select ISA	5	1	1	1
Flexible ISA	0	1	1	0
Online Applications	5	5	5	5
Online Valuations	0	5	5	5
Online Contribution History	0	5	5	5
Online Transaction History	0	5	5	5
Regular Premiums	5	5	5	5
Additional Permitted Subscriptions	0	5	1	0
APS Transfers In Allowed	0	5	1	0

Phased Investment Option	1	1	1	1
Bed and ISA	5	5	1	1
Transfers In From Child Trust Funds	5	0	0	5
In-Specie Transfers	5	1	5	1
Number of Funds	5	2	3	2
External Funds	5	1	1	1
Life Funds	1	1	1	5
Passive/Index Funds	5	5	5	5
Ethical Funds	0	1	5	5
ESG Funds	0	1	5	5
Unit Trusts/OEICs	5	5	5	1
Funds Non-UK	1	1	1	1
ETFs Available	4	1	1	1
Investment Trusts	5	1	1	1
Income Options Available	0	3	1	0
Auto Portfolio Rebalancing	1	1	1	1
<b>Total</b>	<b>68</b>	<b>68</b>	<b>67</b>	<b>67</b>
	<b>Workplace ISA Legal &amp; General (Portfolio Mgt Services)</b>	<b>Plum ISA Plum</b>	<b>X-O.CO.UK ISA Jarvis Investment Management</b>	<b>Quilter Cheviot Ltd ISA Quilter Cheviot</b>
Junior ISA	1	1	1	1
Platform/Self Select ISA	1	1	5	1
Flexible ISA	1	1	1	5
Online Applications	5	5	5	1
Online Valuations	5	5	0	5
Online Contribution History	5	5	0	5
Online Transaction History	5	5	5	5
Regular Premiums	5	5	1	5
Additional Permitted Subscriptions	1	0	5	5
APS Transfers In Allowed	1	0	5	5
Phased Investment Option	1	0	1	5
Bed and ISA	1	1	5	5
Transfers In From Child Trust Funds	0	0	0	0
In-Specie Transfers	5	5	5	5
Number of Funds	3	3	5	5
External Funds	1	5	5	0
Life Funds	1	1	1	0
Passive/Index Funds	5	5	1	0
Ethical Funds	5	5	1	0
ESG Funds	5	5	1	0
Unit Trusts/OEICs	5	5	1	0
Funds Non-UK	1	1	1	0
ETFs Available	1	1	4	0
Investment Trusts	1	1	5	0
Income Options Available	0	0	0	5
Auto Portfolio Rebalancing	1	0	1	1
<b>Total</b>	<b>66</b>	<b>66</b>	<b>65</b>	<b>64</b>

	My Ethical Choice ISA Scottish Friendly	Trading 212 ISA Trading 212	X-O.CO.UK Junior ISA Jarvis Investment Management	Select Junior ISA NFU Mutual
Junior ISA	1	1	5	5
Platform/Self Select ISA	1	1	5	1
Flexible ISA	1	5	0	0
Online Applications	5	5	5	1
Online Valuations	5	5	0	5
Online Contribution History	5	5	0	5
Online Transaction History	5	5	5	5
Regular Premiums	5	1	1	5
Additional Permitted Subscriptions	5	5	0	0
APS Transfers In Allowed	1	5	0	0
Phased Investment Option	1	1	1	1
Bed and ISA	1	1	5	1
Transfers In From Child Trust Funds	0	0	5	5
In-Specie Transfers	1	5	5	1
Number of Funds	1	5	5	2
External Funds	1	1	5	5
Life Funds	5	1	1	1
Passive/Index Funds	5	1	1	1
Ethical Funds	5	1	1	5
ESG Funds	5	1	1	5
Unit Trusts/OEICs	1	1	1	5
Funds Non-UK	1	1	1	1
ETFs Available	1	5	4	1
Investment Trusts	1	1	5	1
Income Options Available	0	0	0	0
Auto Portfolio Rebalancing	1	1	1	1
<b>Total</b>	<b>64</b>	<b>64</b>	<b>63</b>	<b>63</b>
	Children's ISA Actively Managed Option The Children's ISA Limited	Beanstalk Junior ISA Beanstalk	CT ISA (Investment Trust) Columbia Threadneedle Investments	Investec AIM Portfolio IHT Plan ISA Investec Wealth & Investment (UK)
Junior ISA	5	5	1	1
Platform/Self Select ISA	1	1	1	1
Flexible ISA	0	0	5	5
Online Applications	5	5	5	1
Online Valuations	5	5	5	5
Online Contribution History	5	5	5	5
Online Transaction History	5	5	5	5
Regular Premiums	5	5	5	1
Additional Permitted Subscriptions	0	0	5	5
APS Transfers In Allowed	0	0	5	5
Phased Investment Option	1	1	1	5
Bed and ISA	1	1	1	5
Transfers In From Child	5	5	0	0

Trust Funds				
In-Specie Transfers	5	1	1	5
Number of Funds	2	1	2	3
External Funds	5	5	1	1
Life Funds	1	1	1	1
Passive/Index Funds	1	5	1	1
Ethical Funds	1	1	1	1
ESG Funds	1	1	1	1
Unit Trusts/OEICs	5	5	1	1
Funds Non-UK	1	1	1	1
ETFs Available	1	1	1	1
Investment Trusts	1	1	5	1
Income Options Available	0	0	1	0
Auto Portfolio Rebalancing	1	1	1	1
<b>Total</b>	<b>63</b>	<b>62</b>	<b>62</b>	<b>62</b>
	<b>Jupiter ISA</b> Jupiter Asset Management	<b>Ninety One ISA</b> Ninety One	<b>Children's ISA Low Cost Option</b> The Children's ISA Limited	<b>Bank of Scotland Ready Made Investments ISA</b> Bank of Scotland
Junior ISA	1	1	5	1
Platform/Self Select ISA	1	1	1	1
Flexible ISA	1	1	0	5
Online Applications	1	1	5	5
Online Valuations	5	5	5	5
Online Contribution History	0	0	5	5
Online Transaction History	5	5	5	5
Regular Premiums	5	5	5	5
Additional Permitted Subscriptions	5	5	0	5
APS Transfers In Allowed	5	5	0	5
Phased Investment Option	1	1	1	1
Bed and ISA	5	1	1	1
Transfers In From Child Trust Funds	0	0	5	0
In-Specie Transfers	1	5	5	1
Number of Funds	3	3	1	1
External Funds	1	1	5	1
Life Funds	1	1	1	1
Passive/Index Funds	1	1	1	1
Ethical Funds	5	5	1	1
ESG Funds	5	5	1	1
Unit Trusts/OEICs	5	5	5	5
Funds Non-UK	1	1	1	1
ETFs Available	1	1	1	1
Investment Trusts	1	1	1	1
Income Options Available	1	1	0	1
Auto Portfolio Rebalancing	1	1	1	1
<b>Total</b>	<b>62</b>	<b>62</b>	<b>62</b>	<b>61</b>
	<b>CT ISA (Unit Trust/OEIC)</b> Columbia Threadneedle Investments	<b>Stakeholder Junior ISA</b> Forester Life Ltd	<b>Halifax Ready Made Investments ISA</b> Halifax	<b>Lloyds Bank Ready Made Investment ISA</b> Lloyds Bank
Junior ISA	1	5	1	1



Platform/Self Select ISA	1	1	1	1
Flexible ISA	1	0	5	5
Online Applications	1	5	5	5
Online Valuations	5	5	5	5
Online Contribution History	0	5	5	5
Online Transaction History	0	5	5	5
Regular Premiums	5	5	5	5
Additional Permitted Subscriptions	5	0	5	5
APS Transfers In Allowed	5	0	5	5
Phased Investment Option	1	1	1	1
Bed and ISA	1	1	1	1
Transfers In From Child Trust Funds	0	5	0	0
In-Specie Transfers	1	1	1	1
Number of Funds	3	1	1	1
External Funds	1	1	1	1
Life Funds	1	5	1	1
Passive/Index Funds	5	1	1	1
Ethical Funds	5	5	1	1
ESG Funds	5	5	1	1
Unit Trusts/OEICs	5	1	5	5
Funds Non-UK	1	1	1	1
ETFs Available	1	1	1	1
Investment Trusts	1	1	1	1
Income Options Available	5	0	1	1
Auto Portfolio Rebalancing	1	0	1	1
<b>Total</b>	<b>61</b>	<b>61</b>	<b>61</b>	<b>61</b>
	<b>Pilling Stocks &amp; Shares Junior ISA Managed Pilling &amp; Co Stockbrokers Ltd</b>	<b>Junior Shariah ISA Red Rose Friendly Society</b>	<b>My Ethical Select Junior ISA Scottish Friendly</b>	<b>Children's ISA Shariah Option The Children's ISA Limited</b>
Junior ISA	5	5	5	5
Platform/Self Select ISA	1	1	1	1
Flexible ISA	0	0	0	0
Online Applications	1	5	5	5
Online Valuations	5	5	5	5
Online Contribution History	5	1	5	5
Online Transaction History	5	1	5	5
Regular Premiums	5	5	5	5
Additional Permitted Subscriptions	0	0	0	0
APS Transfers In Allowed	0	0	0	0
Phased Investment Option	1	1	1	1
Bed and ISA	5	1	1	1
Transfers In From Child Trust Funds	5	5	5	5
In-Specie Transfers	1	1	1	5
Number of Funds	1	1	1	1
External Funds	5	5	1	5

Life Funds	1	1	5	1
Passive/Index Funds	5	5	1	1
Ethical Funds	1	5	5	1
ESG Funds	1	5	5	1
Unit Trusts/OEICs	5	5	1	1
Funds Non-UK	1	1	1	5
ETFs Available	1	1	1	1
Investment Trusts	1	1	1	1
Income Options Available	0	0	0	0
Auto Portfolio Rebalancing	0	0	0	0
<b>Total</b>	<b>61</b>	<b>61</b>	<b>61</b>	<b>61</b>
	<b>Beanstalk ISA Beanstalk</b>	<b>Investments ISA Monzo</b>	<b>Stakeholder ISA Forester Life Ltd</b>	<b>Investment ISA Freetrade</b>
Junior ISA	1	1	1	1
Platform/Self Select ISA	1	1	1	1
Flexible ISA	5	0	1	5
Online Applications	5	5	5	5
Online Valuations	5	5	5	5
Online Contribution History	5	5	5	5
Online Transaction History	5	5	5	5
Regular Premiums	5	5	5	1
Additional Permitted Subscriptions	1	0	5	0
APS Transfers In Allowed	1	0	1	0
Phased Investment Option	1	1	1	1
Bed and ISA	1	1	1	1
Transfers In From Child Trust Funds	0	0	0	0
In-Specie Transfers	1	5	1	5
Number of Funds	1	1	1	5
External Funds	5	5	1	1
Life Funds	1	1	5	1
Passive/Index Funds	5	1	1	1
Ethical Funds	1	5	5	1
ESG Funds	1	5	5	1
Unit Trusts/OEICs	5	5	1	1
Funds Non-UK	1	1	1	1
ETFs Available	1	1	1	5
Investment Trusts	1	1	1	5
Income Options Available	0	0	0	0
Auto Portfolio Rebalancing	1	0	0	1
<b>Total</b>	<b>60</b>	<b>60</b>	<b>59</b>	<b>58</b>
	<b>Stellar AIM IHT Service Stellar Asset Management Ltd</b>	<b>Artemis ISA Artemis Fund Managers Ltd</b>	<b>Charles Stanley Direct ISA Charles Stanley &amp; Co Ltd</b>	<b>Stocks &amp; Shares ISA IG Trading and Investments Ltd</b>
Junior ISA	1	1	1	1
Platform/Self Select ISA	5	1	5	5
Flexible ISA	1	1	5	5
Online Applications	1	1	5	5
Online Valuations	5	5	5	5

Online Contribution History	5	5	0	0
Online Transaction History	5	5	0	0
Regular Premiums	1	5	5	1
Additional Permitted Subscriptions	5	5	0	0
APS Transfers In Allowed	5	5	0	1
Phased Investment Option	1	1	0	1
Bed and ISA	5	5	5	5
Transfers In From Child Trust Funds	0	0	0	0
In-Specie Transfers	5	1	0	5
Number of Funds	3	2	5	5
External Funds	1	1	5	1
Life Funds	1	1	1	1
Passive/Index Funds	1	1	0	1
Ethical Funds	1	1	0	1
ESG Funds	1	1	0	1
Unit Trusts/OEICs	1	5	5	1
Funds Non-UK	1	1	0	1
ETFs Available	1	1	5	5
Investment Trusts	1	1	5	5
Income Options Available	0	0	0	0
Auto Portfolio Rebalancing	1	1	0	1
<b>Total</b>	<b>58</b>	<b>57</b>	<b>57</b>	<b>57</b>
	<b>Virgin Money Stocks and Shares ISA Virgin Money</b>	<b>Wesleyan Unit Trust ISA Wesleyan Unit Trust Mgrs Ltd</b>	<b>Charles Stanley Direct Junior ISA Charles Stanley &amp; Co Ltd</b>	<b>OneFamily Junior ISA OneFamily</b>
Junior ISA	1	1	5	5
Platform/Self Select ISA	1	1	5	1
Flexible ISA	1	1	0	0
Online Applications	5	5	5	5
Online Valuations	5	5	5	5
Online Contribution History	5	5	0	0
Online Transaction History	5	5	0	0
Regular Premiums	5	5	5	5
Additional Permitted Subscriptions	5	5	0	0
APS Transfers In Allowed	5	5	0	0
Phased Investment Option	1	1	0	1
Bed and ISA	1	1	0	1
Transfers In From Child Trust Funds	0	0	5	5
In-Specie Transfers	1	1	0	1
Number of Funds	1	2	5	1
External Funds	1	1	5	1
Life Funds	1	1	1	1
Passive/Index Funds	1	1	0	5
Ethical Funds	1	1	0	5
ESG Funds	1	1	0	5
Unit Trusts/OEICs	5	5	5	5

Funds Non-UK	1	1	0	1
ETFs Available	1	1	5	1
Investment Trusts	1	1	5	1
Income Options Available	1	0	0	0
Auto Portfolio Rebalancing	1	1	0	1
<b>Total</b>	<b>57</b>	<b>57</b>	<b>56</b>	<b>56</b>
	<b>Post Office Junior ISA Post Office Money</b>	<b>Shariah ISA Red Rose Friendly Society</b>	<b>CT Junior ISA (Investment Trust) Columbia Threadneedle Investments</b>	<b>Premier Miton ISA Premier Miton Investors</b>
Junior ISA	5	1	5	1
Platform/Self Select ISA	1	1	1	1
Flexible ISA	0	1	0	1
Online Applications	5	5	5	1
Online Valuations	5	5	5	5
Online Contribution History	5	1	5	1
Online Transaction History	5	1	5	1
Regular Premiums	5	5	5	5
Additional Permitted Subscriptions	0	1	0	5
APS Transfers In Allowed	0	1	0	5
Phased Investment Option	1	1	1	1
Bed and ISA	1	1	1	1
Transfers In From Child Trust Funds	5	0	5	0
In-Specie Transfers	0	1	1	1
Number of Funds	1	1	2	3
External Funds	5	5	1	1
Life Funds	1	1	1	1
Passive/Index Funds	1	5	1	1
Ethical Funds	1	5	1	5
ESG Funds	1	5	1	5
Unit Trusts/OEICs	5	5	1	5
Funds Non-UK	1	1	1	1
ETFs Available	1	1	1	1
Investment Trusts	1	1	5	1
Income Options Available	0	0	0	1
Auto Portfolio Rebalancing	0	1	1	1
<b>Total</b>	<b>56</b>	<b>56</b>	<b>55</b>	<b>55</b>
	<b>ISA Waystone Management (UK) Limited</b>	<b>Stocks &amp; Shares ISA McInroy &amp; Wood</b>	<b>Schroders Stocks &amp; Shares ISA Schroder UTs Ltd</b>	<b>ISA EdenTree Investment Management Ltd</b>
Junior ISA	1	1	1	1
Platform/Self Select ISA	1	1	1	1
Flexible ISA	1	1	1	5
Online Applications	1	1	1	1
Online Valuations	0	5	1	1
Online Contribution History	0	0	1	1
Online Transaction History	0	5	1	1
Regular Premiums	5	5	5	5

Additional Permitted Subscriptions	5	5	5	5
APS Transfers In Allowed	5	5	1	5
Phased Investment Option	1	1	1	1
Bed and ISA	1	5	1	1
Transfers In From Child Trust Funds	0	0	0	0
In-Specie Transfers	0	1	1	1
Number of Funds	4	1	4	2
External Funds	5	1	1	1
Life Funds	1	1	1	1
Passive/Index Funds	5	1	1	1
Ethical Funds	5	1	5	5
ESG Funds	5	1	5	5
Unit Trusts/OEICs	5	5	5	5
Funds Non-UK	1	1	1	1
ETFs Available	1	1	1	1
Investment Trusts	1	1	5	1
Income Options Available	0	3	3	0
Auto Portfolio Rebalancing	1	1	1	1
<b>Total</b>	<b>55</b>	<b>54</b>	<b>54</b>	<b>53</b>
	<b>Shariah Junior ISA Forester Life Ltd</b>	<b>Fundamental AIM IHT ISA (Direct) Fundamental Asset Management</b>	<b>Quilter Cheviot Ltd Junior ISA Quilter Cheviot</b>	<b>Stocks &amp; Shares ISA Triodos Bank</b>
Junior ISA	5	1	5	1
Platform/Self Select ISA	1	1	1	1
Flexible ISA	0	5	0	1
Online Applications	5	5	1	5
Online Valuations	5	5	5	5
Online Contribution History	5	5	5	0
Online Transaction History	5	5	5	0
Regular Premiums	5	1	5	5
Additional Permitted Subscriptions	0	5	0	0
APS Transfers In Allowed	0	0	0	1
Phased Investment Option	1	1	5	5
Bed and ISA	1	1	5	5
Transfers In From Child Trust Funds	5	0	5	0
In-Specie Transfers	1	5	5	1
Number of Funds	1	3	5	1
External Funds	1	1	0	1
Life Funds	5	1	0	1
Passive/Index Funds	1	1	0	1
Ethical Funds	1	1	0	5
ESG Funds	1	1	0	5
Unit Trusts/OEICs	1	1	0	1
Funds Non-UK	1	1	0	5
ETFs Available	1	1	0	1
Investment Trusts	1	1	0	1

Income Options Available	0	0	0	0
Auto Portfolio Rebalancing	0	1	1	1
<b>Total</b>	<b>53</b>	<b>53</b>	<b>53</b>	<b>53</b>
	<b>Unicorn ISA</b> Unicorn Asset Management	<b>Stocks &amp; Shares ISA</b> BNY Mellon Fund Managers Ltd	<b>Liontrust ISA</b> Liontrust Asset Mgmt	<b>Margetts Junior ISA</b> Margetts Fund Management Ltd
Junior ISA	1	1	1	5
Platform/Self Select ISA	1	1	1	1
Flexible ISA	5	1	1	0
Online Applications	1	5	1	1
Online Valuations	1	5	0	5
Online Contribution History	1	0	0	5
Online Transaction History	1	5	0	5
Regular Premiums	5	5	5	5
Additional Permitted Subscriptions	5	1	5	0
APS Transfers In Allowed	5	1	5	0
Phased Investment Option	1	1	1	1
Bed and ISA	1	1	1	1
Transfers In From Child Trust Funds	0	0	0	5
In-Specie Transfers	1	0	1	1
Number of Funds	2	3	4	3
External Funds	1	1	1	1
Life Funds	1	1	1	1
Passive/Index Funds	1	1	5	1
Ethical Funds	5	5	5	1
ESG Funds	5	5	5	1
Unit Trusts/OEICs	5	5	5	5
Funds Non-UK	1	1	1	1
ETFs Available	1	1	1	1
Investment Trusts	1	1	1	1
Income Options Available	0	0	0	0
Auto Portfolio Rebalancing	1	1	1	1
<b>Total</b>	<b>53</b>	<b>52</b>	<b>52</b>	<b>52</b>
	<b>NatWest Invest Junior ISA</b> NatWest	<b>RBS Invest Junior ISA</b> Royal Bank of Scotland	<b>Wesleyan With Profits ISA</b> Wesleyan Assurance Society	<b>Shariah ISA</b> Forester Life Ltd
Junior ISA	5	5	1	1
Platform/Self Select ISA	1	1	1	1
Flexible ISA	0	0	1	1
Online Applications	5	5	5	5
Online Valuations	5	5	5	5
Online Contribution History	5	5	5	5
Online Transaction History	5	5	5	5
Regular Premiums	5	5	5	5
Additional Permitted Subscriptions	0	0	5	5
APS Transfers In Allowed	0	0	5	1
Phased Investment Option	0	0	1	1

Bed and ISA	1	1	1	1
Transfers In From Child Trust Funds	5	5	0	0
In-Specie Transfers	1	1	1	1
Number of Funds	1	1	1	1
External Funds	1	1	1	1
Life Funds	1	1	1	5
Passive/Index Funds	1	1	1	1
Ethical Funds	1	1	1	1
ESG Funds	1	1	1	1
Unit Trusts/OEICs	1	1	1	1
Funds Non-UK	5	5	1	1
ETFs Available	1	1	1	1
Investment Trusts	1	1	1	1
Income Options Available	0	0	1	0
Auto Portfolio Rebalancing	0	0	0	0
<b>Total</b>	<b>52</b>	<b>52</b>	<b>52</b>	<b>51</b>
	<b>Fundsmith ISA</b> Fundsmith LLP	<b>Margetts ISA</b> Margetts Fund Management Ltd	<b>My Easy Choice (ISA)</b> Scottish Friendly	<b>Wesleyan Unit Trust Junior ISA</b> Wesleyan Unit Trust Mgrs Ltd
Junior ISA	1	1	1	5
Platform/Self Select ISA	1	1	1	1
Flexible ISA	1	1	1	0
Online Applications	5	1	5	1
Online Valuations	1	5	5	5
Online Contribution History	1	5	5	5
Online Transaction History	1	5	5	5
Regular Premiums	5	5	5	5
Additional Permitted Subscriptions	5	5	5	0
APS Transfers In Allowed	5	1	5	0
Phased Investment Option	1	1	1	1
Bed and ISA	1	1	1	1
Transfers In From Child Trust Funds	0	0	0	5
In-Specie Transfers	1	1	1	1
Number of Funds	1	4	1	2
External Funds	1	1	1	1
Life Funds	1	1	1	1
Passive/Index Funds	1	1	1	1
Ethical Funds	5	1	1	1
ESG Funds	5	1	1	1
Unit Trusts/OEICs	5	5	1	5
Funds Non-UK	1	1	1	1
ETFs Available	1	1	1	1
Investment Trusts	1	1	1	1
Income Options Available	0	0	0	0
Auto Portfolio Rebalancing	0	1	0	1
<b>Total</b>	<b>51</b>	<b>51</b>	<b>51</b>	<b>51</b>

	AXA Stocks and Shares ISA AXA Investment Managers UK Ltd	Shepherds Junior ISA Shepherds Friendly Society	Fundsmith Junior ISA Fundsmith LLP	Henderson Investment Funds ISA Janus Henderson Investors
Junior ISA	1	5	5	1
Platform/Self Select ISA	1	1	1	1
Flexible ISA	1	0	0	1
Online Applications	1	5	5	1
Online Valuations	1	5	1	5
Online Contribution History	1	5	1	0
Online Transaction History	1	5	1	5
Regular Premiums	5	5	5	5
Additional Permitted Subscriptions	5	0	0	1
APS Transfers In Allowed	5	0	0	1
Phased Investment Option	1	1	1	1
Bed and ISA	1	1	1	1
Transfers In From Child Trust Funds	0	5	5	0
In-Specie Transfers	1	1	1	1
Number of Funds	3	1	1	3
External Funds	1	1	1	1
Life Funds	1	1	1	1
Passive/Index Funds	1	1	1	1
Ethical Funds	5	1	5	5
ESG Funds	5	1	5	5
Unit Trusts/OEICs	5	1	5	5
Funds Non-UK	1	1	1	1
ETFs Available	1	1	1	1
Investment Trusts	1	1	1	1
Income Options Available	0	0	0	0
Auto Portfolio Rebalancing	1	1	0	1
<b>Total</b>	<b>50</b>	<b>50</b>	<b>49</b>	<b>49</b>
	Stocks & Shares ISA LV=	Marks & Spencer Stocks and Shares ISA M&S Bank	ESG ISA Red Rose Friendly Society	St James Place ISA St. James's Place UT Group Ltd
Junior ISA	1	1	1	1
Platform/Self Select ISA	1	1	1	1
Flexible ISA	1	1	1	0
Online Applications	5	1	5	1
Online Valuations	5	1	5	0
Online Contribution History	5	1	0	0
Online Transaction History	5	1	0	0
Regular Premiums	1	5	5	5
Additional Permitted Subscriptions	5	5	5	5
APS Transfers In Allowed	5	5	5	5
Phased Investment Option	1	1	1	1
Bed and ISA	1	5	1	1
Transfers In From Child	0	0	0	0



Trust Funds				
In-Specie Transfers	1	1	1	1
Number of Funds	1	1	1	3
External Funds	1	1	1	1
Life Funds	1	1	1	1
Passive/Index Funds	1	5	1	1
Ethical Funds	1	1	5	5
ESG Funds	1	1	5	5
Unit Trusts/OEICs	1	5	1	5
Funds Non-UK	1	1	1	1
ETFs Available	1	1	1	1
Investment Trusts	1	1	1	1
Income Options Available	1	1	0	3
Auto Portfolio Rebalancing	1	1	0	1
<b>Total</b>	<b>49</b>	<b>49</b>	<b>49</b>	<b>49</b>
	<b>DIY ISA Moneyfarm</b>	<b>Stocks and Shares Junior ISA NuWealth</b>	<b>Junior ESG ISA Red Rose Friendly Society</b>	<b>Unicorn JISA Unicorn Asset Management</b>
Junior ISA	1	5	5	5
Platform/Self Select ISA	1	1	1	1
Flexible ISA	5	0	0	0
Online Applications	5	5	5	1
Online Valuations	0	5	5	1
Online Contribution History	0	5	0	1
Online Transaction History	0	5	0	1
Regular Premiums	5	5	5	5
Additional Permitted Subscriptions	5	0	0	0
APS Transfers In Allowed	5	0	0	0
Phased Investment Option	1	1	1	1
Bed and ISA	1	1	1	1
Transfers In From Child Trust Funds	0	5	5	5
In-Specie Transfers	0	1	1	1
Number of Funds	0	3	1	2
External Funds	5	0	1	1
Life Funds	1	0	1	1
Passive/Index Funds	0	0	1	1
Ethical Funds	0	0	5	5
ESG Funds	0	0	5	5
Unit Trusts/OEICs	5	0	1	5
Funds Non-UK	1	0	1	1
ETFs Available	4	0	1	1
Investment Trusts	1	0	1	1
Income Options Available	0	0	0	0
Auto Portfolio Rebalancing	1	5	0	1
<b>Total</b>	<b>47</b>	<b>47</b>	<b>47</b>	<b>47</b>
	<b>Vanguard Managed ISA Vanguard Asset Management</b>	<b>Scottish Friendly My Sovereign Investment ISA Forces Mutual</b>	<b>FP WHEB Asset Management ISA FundRock Partners Limited</b>	<b>OneFamily Stocks &amp; Shares ISA OneFamily</b>
Junior ISA	1	1	1	1

Platform/Self Select ISA	1	1	1	1
Flexible ISA	5	1	1	1
Online Applications	5	5	1	5
Online Valuations	5	5	1	5
Online Contribution History	5	5	1	5
Online Transaction History	5	5	1	5
Regular Premiums	5	5	5	5
Additional Permitted Subscriptions	5	5	5	1
APS Transfers In Allowed	1	0	1	1
Phased Investment Option	1	1	1	0
Bed and ISA	1	1	1	0
Transfers In From Child Trust Funds	0	0	0	0
In-Specie Transfers	1	1	1	1
Number of Funds	1	1	1	1
External Funds	0	1	1	1
Life Funds	0	1	1	1
Passive/Index Funds	0	1	1	1
Ethical Funds	0	1	5	1
ESG Funds	0	1	5	1
Unit Trusts/OEICs	0	1	5	5
Funds Non-UK	0	1	1	1
ETFs Available	0	1	1	1
Investment Trusts	0	1	1	1
Income Options Available	0	0	3	0
Auto Portfolio Rebalancing	5	0	0	1
<b>Total</b>	<b>47</b>	<b>46</b>	<b>46</b>	<b>46</b>
	<b>Orbis Stocks &amp; Shares ISA Orbis</b>	<b>WAY Stocks and Shares ISA WAY Fund Managers Ltd</b>	<b>First Sentier Investors Stocks and Shares ISA First Sentier Investors (UK) Funds Ltd</b>	<b>Liontrust Junior ISA Liontrust Asset Mgmt</b>
Junior ISA	1	1	1	5
Platform/Self Select ISA	1	1	1	1
Flexible ISA	1	1	1	0
Online Applications	5	1	1	1
Online Valuations	5	1	1	0
Online Contribution History	0	1	1	0
Online Transaction History	0	1	1	0
Regular Premiums	5	5	5	5
Additional Permitted Subscriptions	5	5	5	0
APS Transfers In Allowed	5	1	1	0
Phased Investment Option	1	1	1	1
Bed and ISA	1	1	1	1
Transfers In From Child Trust Funds	0	0	0	1
In-Specie Transfers	1	1	1	0
Number of Funds	1	3	2	4
External Funds	1	1	1	1

Life Funds	1	1	1	1
Passive/Index Funds	1	1	1	5
Ethical Funds	1	5	5	5
ESG Funds	1	5	5	5
Unit Trusts/OEICs	5	5	5	5
Funds Non-UK	1	1	1	1
ETFs Available	1	1	1	1
Investment Trusts	1	1	1	1
Income Options Available	0	0	0	0
Auto Portfolio Rebalancing	1	1	1	1
<b>Total</b>	<b>46</b>	<b>46</b>	<b>45</b>	<b>45</b>
	<b>St James Place Junior ISA St. James's Place UT Group Ltd</b>	<b>Unity Mutual Flexible ISA Unity Mutual</b>	<b>Wealthify Junior ISA Wealthify Limited</b>	<b>FP Octopus Investment Funds ISA FundRock Partners Limited</b>
Junior ISA	5	1	5	1
Platform/Self Select ISA	1	1	1	1
Flexible ISA	0	5	0	1
Online Applications	1	5	5	1
Online Valuations	0	5	5	1
Online Contribution History	0	1	5	1
Online Transaction History	0	1	5	1
Regular Premiums	5	5	5	5
Additional Permitted Subscriptions	0	5	0	5
APS Transfers In Allowed	0	0	0	1
Phased Investment Option	1	1	1	1
Bed and ISA	1	1	1	1
Transfers In From Child Trust Funds	5	0	5	0
In-Specie Transfers	1	0	0	1
Number of Funds	3	1	2	1
External Funds	1	1	0	1
Life Funds	1	5	0	1
Passive/Index Funds	1	1	0	1
Ethical Funds	5	1	0	5
ESG Funds	5	1	0	5
Unit Trusts/OEICs	5	1	0	5
Funds Non-UK	1	1	0	1
ETFs Available	1	1	0	1
Investment Trusts	1	1	0	1
Income Options Available	0	0	0	0
Auto Portfolio Rebalancing	1	0	5	1
<b>Total</b>	<b>45</b>	<b>45</b>	<b>45</b>	<b>44</b>
	<b>Healthy Investment Ethical ISA Healthy Investment</b>	<b>Healthy Investment Ethical ISA -Adviser charging Healthy Investment</b>	<b>Orbis Junior Stocks &amp; Shares ISA Orbis</b>	<b>Unity Mutual Junior ISA Unity Mutual</b>
Junior ISA	1	1	5	5
Platform/Self Select ISA	1	1	1	1
Flexible ISA	1	1	0	0
Online Applications	5	5	5	5

Online Valuations	0	0	5	5
Online Contribution History	0	0	0	1
Online Transaction History	0	0	0	1
Regular Premiums	5	5	5	5
Additional Permitted Subscriptions	5	5	0	0
APS Transfers In Allowed	5	5	0	0
Phased Investment Option	1	1	1	1
Bed and ISA	1	1	1	1
Transfers In From Child Trust Funds	0	0	5	5
In-Specie Transfers	1	1	1	0
Number of Funds	1	1	1	1
External Funds	1	1	1	1
Life Funds	1	1	1	5
Passive/Index Funds	1	1	1	1
Ethical Funds	5	5	1	1
ESG Funds	5	5	1	1
Unit Trusts/OEICs	1	1	5	1
Funds Non-UK	1	1	1	1
ETFs Available	1	1	1	1
Investment Trusts	1	1	1	1
Income Options Available	0	0	0	0
Auto Portfolio Rebalancing	0	0	1	0
<b>Total</b>	<b>44</b>	<b>44</b>	<b>44</b>	<b>44</b>
	<b>FP Foresight ISA</b> FundRock Partners Limited	<b>Sheffield Mutual Sustainable ISA</b> Sheffield Mutual Friendly Society	<b>Junior ISA</b> Waystone Management (UK) Limited	<b>Netwealth Junior ISA</b> Netwealth
Junior ISA	1	1	5	5
Platform/Self Select ISA	1	1	1	1
Flexible ISA	1	1	0	0
Online Applications	1	5	1	5
Online Valuations	1	1	0	5
Online Contribution History	1	1	0	5
Online Transaction History	1	1	0	5
Regular Premiums	5	5	5	5
Additional Permitted Subscriptions	5	1	0	0
APS Transfers In Allowed	1	1	0	0
Phased Investment Option	1	1	1	1
Bed and ISA	1	1	1	1
Transfers In From Child Trust Funds	0	0	1	5
In-Specie Transfers	1	1	0	1
Number of Funds	1	1	2	2
External Funds	1	1	5	0
Life Funds	1	5	1	0
Passive/Index Funds	1	1	1	0
Ethical Funds	5	5	5	0

ESG Funds	5	5	5	0
Unit Trusts/OEICs	5	1	5	0
Funds Non-UK	1	1	1	0
ETFs Available	1	1	1	0
Investment Trusts	1	1	1	0
Income Options Available	0	0	0	0
Auto Portfolio Rebalancing	0	0	1	1
<b>Total</b>	<b>43</b>	<b>43</b>	<b>43</b>	<b>42</b>
	<b>Nutmeg Junior ISA Nutmeg</b>	<b>ConBrio ISA ConBrio</b>	<b>Fundamental AIM IHT ISA (Platform) Fundamental Asset Management</b>	<b>Healthy With Profits Junior ISA Healthy Investment</b>
Junior ISA	5	1	1	5
Platform/Self Select ISA	1	1	5	1
Flexible ISA	0	1	5	0
Online Applications	5	1	1	5
Online Valuations	5	1	1	0
Online Contribution History	5	1	1	0
Online Transaction History	5	1	1	0
Regular Premiums	1	5	1	5
Additional Permitted Subscriptions	0	0	5	0
APS Transfers In Allowed	0	0	0	0
Phased Investment Option	1	0	1	1
Bed and ISA	1	0	1	1
Transfers In From Child Trust Funds	5	0	0	5
In-Specie Transfers	1	1	5	0
Number of Funds	2	2	3	1
External Funds	0	1	1	1
Life Funds	0	1	1	1
Passive/Index Funds	0	1	1	1
Ethical Funds	0	5	1	5
ESG Funds	0	5	1	5
Unit Trusts/OEICs	0	5	1	1
Funds Non-UK	0	1	1	1
ETFs Available	0	1	1	1
Investment Trusts	0	1	1	1
Income Options Available	0	5	0	0
Auto Portfolio Rebalancing	5	0	1	0
<b>Total</b>	<b>42</b>	<b>41</b>	<b>41</b>	<b>41</b>
	<b>Healthy With Profits Junior ISA - Adviser charging Healthy Investment</b>	<b>Shepherds Stocks and Shares ISA Shepherds Friendly Society</b>	<b>UBS ISA UBS</b>	<b>IFSL ISA Investment Fund Services Ltd</b>
Junior ISA	5	1	1	1
Platform/Self Select ISA	1	1	1	1
Flexible ISA	0	1	1	1
Online Applications	5	5	1	1
Online Valuations	0	5	1	1
Online Contribution	0	0	1	1

History				
Online Transaction History	0	0	1	1
Regular Premiums	5	5	5	5
Additional Permitted Subscriptions	0	5	5	5
APS Transfers In Allowed	0	5	5	5
Phased Investment Option	1	1	1	1
Bed and ISA	1	1	1	1
Transfers In From Child Trust Funds	5	0	0	0
In-Specie Transfers	0	1	1	1
Number of Funds	1	1	2	3
External Funds	1	1	1	1
Life Funds	1	1	1	1
Passive/Index Funds	1	1	1	0
Ethical Funds	5	1	1	1
ESG Funds	5	1	1	1
Unit Trusts/OEICs	1	1	5	5
Funds Non-UK	1	1	1	1
ETFs Available	1	1	1	1
Investment Trusts	1	1	1	1
Income Options Available	0	0	0	0
Auto Portfolio Rebalancing	0	0	1	0
<b>Total</b>	<b>41</b>	<b>41</b>	<b>41</b>	<b>40</b>
	<b>Stocks &amp; Shares Junior ISA McInroy &amp; Wood</b>	<b>Nutmeg Stocks &amp; Shares ISA Nutmeg</b>	<b>SVM ISA SVM Asset Management Ltd</b>	<b>ConBrio JISA ConBrio</b>
Junior ISA	5	1	1	5
Platform/Self Select ISA	1	1	1	1
Flexible ISA	0	1	1	0
Online Applications	1	5	1	1
Online Valuations	5	5	1	1
Online Contribution History	0	5	1	1
Online Transaction History	0	5	1	1
Regular Premiums	5	5	5	5
Additional Permitted Subscriptions	0	1	1	0
APS Transfers In Allowed	0	1	1	0
Phased Investment Option	1	1	1	0
Bed and ISA	1	1	1	0
Transfers In From Child Trust Funds	5	0	0	0
In-Specie Transfers	1	1	1	1
Number of Funds	1	2	1	2
External Funds	1	0	1	1
Life Funds	1	0	1	1
Passive/Index Funds	1	0	1	1
Ethical Funds	1	0	5	5
ESG Funds	1	0	5	5
Unit Trusts/OEICs	5	0	5	5
Funds Non-UK	1	0	1	1

ETFs Available	1	0	1	1
Investment Trusts	1	0	1	1
Income Options Available	0	0	0	0
Auto Portfolio Rebalancing	1	5	1	0
<b>Total</b>	<b>40</b>	<b>40</b>	<b>40</b>	<b>39</b>
	<b>FP Apollo ISA</b> FundRock Partners Limited	<b>FP Volare ISA</b> FundRock Partners Limited	<b>IFSL Junior ISA</b> Investment Fund Services Ltd	<b>Netwealth ISA</b> Netwealth
Junior ISA	1	1	5	1
Platform/Self Select ISA	1	1	1	1
Flexible ISA	1	1	1	1
Online Applications	1	1	1	5
Online Valuations	1	1	1	5
Online Contribution History	1	1	1	5
Online Transaction History	1	1	1	5
Regular Premiums	5	5	5	5
Additional Permitted Subscriptions	5	5	0	5
APS Transfers In Allowed	1	1	0	0
Phased Investment Option	1	1	1	1
Bed and ISA	1	1	1	1
Transfers In From Child Trust Funds	0	0	5	0
In-Specie Transfers	1	0	1	1
Number of Funds	1	2	3	2
External Funds	1	1	1	0
Life Funds	1	1	1	0
Passive/Index Funds	1	1	0	0
Ethical Funds	1	1	1	0
ESG Funds	1	1	1	0
Unit Trusts/OEICs	5	5	5	0
Funds Non-UK	1	1	1	0
ETFs Available	1	1	1	0
Investment Trusts	1	1	1	0
Income Options Available	3	3	0	0
Auto Portfolio Rebalancing	1	1	0	1
<b>Total</b>	<b>39</b>	<b>39</b>	<b>39</b>	<b>39</b>
	<b>Stocks and Shares ISA</b> NuWealth	<b>Sheffield Mutual Investment ISA</b> Sheffield Mutual Friendly Society	<b>Stocks &amp; Shares ISA</b> Allianz Global Investors	<b>NatWest Invest ISA</b> NatWest
Junior ISA	1	1	1	1
Platform/Self Select ISA	1	1	1	1
Flexible ISA	1	1	1	0
Online Applications	5	5	1	5
Online Valuations	5	1	1	5
Online Contribution History	5	1	1	5
Online Transaction History	5	1	1	5
Regular Premiums	5	5	5	0
Additional Permitted	0	5	5	0

Subscriptions				
APS Transfers In Allowed	0	5	1	0
Phased Investment Option	1	1	1	0
Bed and ISA	1	1	1	1
Transfers In From Child Trust Funds	0	0	0	0
In-Specie Transfers	1	1	1	1
Number of Funds	3	1	2	1
External Funds	0	1	1	1
Life Funds	0	1	1	1
Passive/Index Funds	0	1	1	1
Ethical Funds	0	1	1	1
ESG Funds	0	1	1	1
Unit Trusts/OEICs	0	1	5	1
Funds Non-UK	0	1	1	5
ETFs Available	0	1	1	1
Investment Trusts	0	1	1	1
Income Options Available	0	0	1	0
Auto Portfolio Rebalancing	5	0	1	0
<b>Total</b>	<b>39</b>	<b>39</b>	<b>38</b>	<b>38</b>
	<b>Puma AIM IHT ISA Puma Investments</b>	<b>RBS Invest ISA Royal Bank of Scotland</b>	<b>Saxo ISA Saxo Capital Markets UK Limited</b>	<b>Wahed Invest ISA Wahed Invest</b>
Junior ISA	1	1	1	1
Platform/Self Select ISA	1	1	5	1
Flexible ISA	1	0	1	1
Online Applications	1	5	5	5
Online Valuations	5	5	5	5
Online Contribution History	0	5	0	5
Online Transaction History	0	5	0	5
Regular Premiums	1	0	0	5
Additional Permitted Subscriptions	5	0	0	0
APS Transfers In Allowed	5	0	0	1
Phased Investment Option	1	0	0	1
Bed and ISA	1	1	0	0
Transfers In From Child Trust Funds	0	0	0	0
In-Specie Transfers	1	1	0	1
Number of Funds	5	1	5	2
External Funds	1	1	1	0
Life Funds	1	1	1	0
Passive/Index Funds	1	1	0	0
Ethical Funds	1	1	1	0
ESG Funds	1	1	1	0
Unit Trusts/OEICs	1	1	1	0
Funds Non-UK	1	5	1	0
ETFs Available	1	1	5	0
Investment Trusts	1	1	5	0
Income Options Available	0	0	0	0



Auto Portfolio Rebalancing	1	0	0	5
<b>Total</b>	<b>38</b>	<b>38</b>	<b>38</b>	<b>38</b>
	<b>Metfriendly Junior ISA Metfriendly</b>	<b>Moneybox Junior ISA Moneybox</b>	<b>Sheffield Mutual Investment Junior ISA Sheffield Mutual Friendly Society</b>	<b>Wealthify Investment ISA Wealthify Limited</b>
Junior ISA	5	5	5	1
Platform/Self Select ISA	1	1	1	1
Flexible ISA	0	0	0	1
Online Applications	5	5	5	5
Online Valuations	1	5	1	5
Online Contribution History	1	5	1	5
Online Transaction History	1	5	1	5
Regular Premiums	5	5	5	5
Additional Permitted Subscriptions	0	0	0	0
APS Transfers In Allowed	0	0	0	0
Phased Investment Option	1	1	1	1
Bed and ISA	1	1	1	1
Transfers In From Child Trust Funds	5	1	5	0
In-Specie Transfers	1	1	1	0
Number of Funds	1	1	1	2
External Funds	1	0	1	0
Life Funds	1	0	1	0
Passive/Index Funds	1	0	1	0
Ethical Funds	1	0	1	0
ESG Funds	1	0	1	0
Unit Trusts/OEICs	1	0	1	0
Funds Non-UK	1	0	1	0
ETFs Available	1	0	1	0
Investment Trusts	1	0	1	0
Income Options Available	0	0	0	0
Auto Portfolio Rebalancing	0	1	0	5
<b>Total</b>	<b>37</b>	<b>37</b>	<b>37</b>	<b>37</b>
	<b>FP Russell ISA FundRock Partners Limited</b>	<b>Sarasin ISA Sarasin Investment Funds Ltd</b>	<b>Managed ISA Moneyfarm</b>	<b>Shrewd Savings Plan ISA NFU Mutual</b>
Junior ISA	1	1	1	1
Platform/Self Select ISA	1	1	1	1
Flexible ISA	1	1	5	1
Online Applications	1	1	5	1
Online Valuations	1	0	0	1
Online Contribution History	1	0	0	1
Online Transaction History	1	0	0	1
Regular Premiums	5	1	5	5
Additional Permitted Subscriptions	5	0	5	5
APS Transfers In Allowed	1	1	5	5
Phased Investment Option	1	1	1	1

Bed and ISA	1	1	1	1
Transfers In From Child Trust Funds	0	0	0	0
In-Specie Transfers	0	0	0	1
Number of Funds	2	2	1	1
External Funds	1	1	0	1
Life Funds	1	1	0	1
Passive/Index Funds	1	1	0	1
Ethical Funds	1	5	0	1
ESG Funds	1	5	0	1
Unit Trusts/OEICs	5	5	0	1
Funds Non-UK	1	5	0	1
ETFs Available	1	1	0	1
Investment Trusts	1	1	0	1
Income Options Available	0	0	0	0
Auto Portfolio Rebalancing	1	1	5	0
<b>Total</b>	<b>36</b>	<b>36</b>	<b>35</b>	<b>35</b>
	<b>FP Pictet Stocks &amp; Shares ISA FundRock Partners Limited</b>	<b>Moneybox ISA Moneybox</b>	<b>Rathbone Greenbank Multi-Asset Portfolios ISA Rathbone Asset Management Limited</b>	<b>Slater Stocks &amp; Shares Junior ISA Slater Investments Limited</b>
Junior ISA	1	1	1	5
Platform/Self Select ISA	1	1	1	1
Flexible ISA	1	1	1	0
Online Applications	1	5	1	1
Online Valuations	1	5	1	1
Online Contribution History	1	5	1	1
Online Transaction History	1	5	1	1
Regular Premiums	5	5	1	5
Additional Permitted Subscriptions	5	0	0	0
APS Transfers In Allowed	1	1	0	0
Phased Investment Option	1	1	1	1
Bed and ISA	1	1	1	1
Transfers In From Child Trust Funds	0	0	0	1
In-Specie Transfers	0	1	1	1
Number of Funds	1	1	1	1
External Funds	1	0	1	1
Life Funds	1	0	1	1
Passive/Index Funds	1	0	1	1
Ethical Funds	1	0	5	1
ESG Funds	1	0	5	1
Unit Trusts/OEICs	5	0	5	5
Funds Non-UK	1	0	1	1
ETFs Available	1	0	1	1
Investment Trusts	1	0	1	1
Income Options Available	0	0	0	0
Auto Portfolio Rebalancing	0	1	1	1
<b>Total</b>	<b>34</b>	<b>34</b>	<b>34</b>	<b>34</b>

	Artemis Junior ISA Artemis Fund Managers Ltd	Octopus AIM Inheritance Tax ISA Octopus Investments	Rathbone Single Strategy Fund ISA Rathbone Asset Management Limited	MI Funds ISA Apex Fundrock Ltd
Junior ISA	5	1	1	1
Platform/Self Select ISA	1	1	1	1
Flexible ISA	0	1	1	1
Online Applications	1	1	1	1
Online Valuations	1	5	0	1
Online Contribution History	0	0	0	1
Online Transaction History	0	0	0	1
Regular Premiums	5	1	1	0
Additional Permitted Subscriptions	0	1	0	5
APS Transfers In Allowed	0	1	1	0
Phased Investment Option	1	1	1	1
Bed and ISA	1	1	1	1
Transfers In From Child Trust Funds	1	0	0	0
In-Specie Transfers	1	1	1	1
Number of Funds	2	3	2	3
External Funds	1	5	1	1
Life Funds	1	1	1	1
Passive/Index Funds	1	1	1	1
Ethical Funds	1	1	5	1
ESG Funds	1	1	5	1
Unit Trusts/OEICs	5	1	5	5
Funds Non-UK	1	1	1	1
ETFs Available	1	1	1	1
Investment Trusts	1	1	1	1
Income Options Available	0	1	0	0
Auto Portfolio Rebalancing	1	1	1	1
<b>Total</b>	<b>33</b>	<b>33</b>	<b>33</b>	<b>32</b>
	Slater Stocks & Shares ISA Slater Investments Limited	Smart Portfolio ISA IG Trading and Investments Ltd	Metfriendly Lump Sum ISA Metfriendly	Metfriendly Monthly Savings ISA Metfriendly
Junior ISA	1	1	1	1
Platform/Self Select ISA	1	5	1	1
Flexible ISA	1	5	1	1
Online Applications	1	5	5	5
Online Valuations	1	5	1	1
Online Contribution History	1	0	1	1
Online Transaction History	1	0	1	1
Regular Premiums	5	1	1	1
Additional Permitted Subscriptions	1	0	5	5
APS Transfers In Allowed	1	1	0	0
Phased Investment Option	1	1	1	1
Bed and ISA	1	1	1	1
Transfers In From Child	0	0	0	0

Trust Funds				
In-Specie Transfers	1	0	1	1
Number of Funds	1	1	1	1
External Funds	1	0	1	1
Life Funds	1	0	1	1
Passive/Index Funds	1	0	1	1
Ethical Funds	1	0	1	1
ESG Funds	1	0	1	1
Unit Trusts/OEICs	5	0	1	1
Funds Non-UK	1	0	1	1
ETFs Available	1	0	1	1
Investment Trusts	1	0	1	1
Income Options Available	0	0	0	0
Auto Portfolio Rebalancing	1	5	0	0
<b>Total</b>	<b>32</b>	<b>31</b>	<b>30</b>	<b>30</b>
	<b>Stocks &amp; Shares Junior ISA Moneyfarm</b>	<b>VT Sinfonia OEIC ISA Valu-Trac Investment Management Ltd</b>	<b>Downing AIM ISA Downing</b>	<b>VT Sinfonia OEIC JISA Valu-Trac Investment Management Ltd</b>
Junior ISA	5	1	1	5
Platform/Self Select ISA	1	1	1	1
Flexible ISA	0	0	5	0
Online Applications	5	1	1	1
Online Valuations	0	1	1	1
Online Contribution History	0	1	1	1
Online Transaction History	0	1	1	1
Regular Premiums	5	1	1	1
Additional Permitted Subscriptions	0	5	1	0
APS Transfers In Allowed	0	0	1	0
Phased Investment Option	1	1	1	1
Bed and ISA	1	1	1	1
Transfers In From Child Trust Funds	5	0	0	0
In-Specie Transfers	0	1	1	1
Number of Funds	2	1	3	1
External Funds	0	1	1	1
Life Funds	0	1	1	1
Passive/Index Funds	0	1	1	1
Ethical Funds	0	1	1	1
ESG Funds	0	1	1	1
Unit Trusts/OEICs	0	5	1	5
Funds Non-UK	0	1	1	1
ETFs Available	0	1	1	1
Investment Trusts	0	1	1	1
Income Options Available	0	0	0	0
Auto Portfolio Rebalancing	5	1	0	1
<b>Total</b>	<b>30</b>	<b>30</b>	<b>29</b>	<b>29</b>
	<b>Rathbone Multi Asset Portfolio ISA Rathbone Asset Management Limited</b>	<b>TIME Investments AIM IHT ISA TIME Investments</b>	<b>Adapt AIM ISA Portfolios Blackfinch Investments</b>	<b>Unicorn AIM IHT ISA Portfolio Service Unicorn Asset Management</b>

Junior ISA	1	1	1	1
Platform/Self Select ISA	1	1	1	1
Flexible ISA	1	1	1	1
Online Applications	1	1	1	1
Online Valuations	0	1	1	1
Online Contribution History	0	1	1	1
Online Transaction History	0	1	1	1
Regular Premiums	1	1	1	1
Additional Permitted Subscriptions	0	5	0	0
APS Transfers In Allowed	1	5	0	0
Phased Investment Option	1	0	0	1
Bed and ISA	1	0	0	1
Transfers In From Child Trust Funds	0	0	0	0
In-Specie Transfers	1	1	5	1
Number of Funds	2	0	1	1
External Funds	1	0	0	0
Life Funds	1	0	0	0
Passive/Index Funds	1	0	0	0
Ethical Funds	1	0	0	0
ESG Funds	1	0	0	0
Unit Trusts/OEICs	5	0	0	0
Funds Non-UK	1	0	0	0
ETFs Available	1	0	0	0
Investment Trusts	1	0	0	0
Income Options Available	0	0	0	1
Auto Portfolio Rebalancing	1	5	0	1
<b>Total</b>	<b>25</b>	<b>24</b>	<b>14</b>	<b>14</b>
	<b>Credo ISA Credo</b>	<b>Platform One Stocks &amp; Shares Junior ISA Platform One</b>	<b>BlackRock NISA BlackRock</b>	<b>Platform One Stocks &amp; Shares ISA Platform One</b>
Junior ISA	1	5	1	1
Platform/Self Select ISA	5	5	1	5
Flexible ISA	5	0	0	0
Online Applications	0	0	0	0
Online Valuations	0	0	0	0
Online Contribution History	0	0	0	0
Online Transaction History	0	0	0	0
Regular Premiums	0	0	5	0
Additional Permitted Subscriptions	0	0	0	0
APS Transfers In Allowed	0	0	0	0
Phased Investment Option	0	0	0	0
Bed and ISA	0	0	0	0
Transfers In From Child Trust Funds	0	0	0	0
In-Specie Transfers	0	0	0	0
Number of Funds	0	0	0	0
External Funds	0	0	0	0

Life Funds	0	0	0	0
Passive/Index Funds	0	0	0	0
Ethical Funds	0	0	0	0
ESG Funds	0	0	0	0
Unit Trusts/OEICs	0	0	0	0
Funds Non-UK	0	0	0	0
ETFs Available	0	0	0	0
Investment Trusts	0	0	0	0
Income Options Available	0	0	0	0
Auto Portfolio Rebalancing	0	0	0	0
<b>Total</b>	<b>11</b>	<b>10</b>	<b>7</b>	<b>6</b>
	<b>ISA</b>			
	Rathbones Investment Management			
Junior ISA	1			
Platform/Self Select ISA	1			
Flexible ISA	0			
Online Applications	0			
Online Valuations	0			
Online Contribution History	0			
Online Transaction History	0			
Regular Premiums	0			
Additional Permitted Subscriptions	0			
APS Transfers In Allowed	0			
Phased Investment Option	0			
Bed and ISA	0			
Transfers In From Child Trust Funds	0			
In-Specie Transfers	0			
Number of Funds	0			
External Funds	0			
Life Funds	0			
Passive/Index Funds	0			
Ethical Funds	0			
ESG Funds	0			
Unit Trusts/OEICs	0			
Funds Non-UK	0			
ETFs Available	0			
Investment Trusts	0			
Income Options Available	0			
Auto Portfolio Rebalancing	0			
<b>Total</b>	<b>2</b>			

## DNA description for DNA Graph Export : 02/01/2025 08:51:56

<b>Junior ISA</b> <i>Is this a Junior ISA</i> <b>1</b> Not a Junior ISA <b>5</b> Junior ISA	<b>Platform/Self Select ISA</b> <i>Is this a Platform/Self Select ISA.</i> <b>1</b> Not a Platform/Self Select ISA <b>5</b> Platform/Self Select ISA
<b>Flexible ISA</b> <i>ISA offers Stocks &amp; Shares ISA flexibility - allows previously withdrawn money to be returned within the same tax year without further contributing to the investor's annual allowance</i> <b>1</b> Is not a flexible ISA <b>5</b> Is a flexible ISA	<b>Online Applications</b> <i>Do providers accept business for this product online</i> <b>1</b> It is not possible to write new business online for this product <b>5</b> It is possible to write new business online for this product
<b>Online Valuations</b> <i>Valuations of underlying portfolio can be viewed online</i> <b>1</b> Online valuations are not provided <b>5</b> Online valuations are provided	<b>Online Contribution History</b> <i>Online contribution history available</i> <b>1</b> Online contribution history not provided <b>5</b> Online contribution history provided
<b>Online Transaction History</b> <i>Product provides online transaction history</i> <b>1</b> Online transaction history not provided <b>5</b> Online transaction history provided	<b>Regular Premiums</b> <i>Regular premiums accepted</i> <b>1</b> Regular premiums are not accepted <b>5</b> Regular premiums are accepted
<b>Additional Permitted Subscriptions</b> <i>Product facilitates additional permitted subscriptions for the client upon spouse/civil partner death.</i> <b>1</b> Additional permitted subscriptions not facilitated <b>5</b> Additional permitted subscriptions facilitated	<b>APS Transfers In Allowed</b> <i>Additional Permitted Subscriptions (APS), on top of the annual subscription limit, available to the surviving spouse of a deceased ISA holder, may be transferred in from another ISA provider to this ISA</i> <b>1</b> Transfers in of Additional Permitted Subscriptions not permitted <b>5</b> Transfers in of Additional Permitted Subscriptions permitted
<b>Phased Investment Option</b> <i>Option for phased investment available.</i> <b>1</b> Phased investment option not available <b>5</b> Phased investment option available	<b>Bed and ISA</b> <i>May Bed and ISA an investment, selling an investment held outside the ISA and then repurchase it when in the ISA</i> <b>1</b> Bed and ISA not available <b>5</b> Bed and ISA available
<b>Transfers In From Child Trust Funds</b> <i>Can funds from Child Trust Funds be transferred in?</i> <b>1</b> Transfers in from Child Trust Fund not allowed <b>5</b> Transfers in from Child Trust Fund allowed	<b>In-Specie Transfers</b> <i>In-specie transfers from another ISA manager accepted.</i> <b>1</b> In-specie Transfers not accepted <b>5</b> In-specie Transfers accepted
<b>Number of Funds</b> <i>Number of Funds Available</i> <b>1</b> 1 - 5 <b>2</b> 6 - 20 <b>3</b> 21 - 50 <b>4</b> 51 - 150 <b>5</b> 151 and over	<b>External Funds</b> <i>Choice of funds from groups other than the ISA provider</i> <b>1</b> No external fund link choices <b>5</b> External fund link choices
<b>Life Funds</b> <i>Life funds available</i> <b>1</b> No life funds facilitated <b>5</b> Life funds facilitated	<b>Passive/Index Funds</b> <i>Can funds be chosen on a tracker/passive basis?</i> <b>1</b> Cannot choose index tracking funds <b>5</b> Can choose index tracking funds
<b>Ethical Funds</b> <i>Ethical/environmental fund links available</i> <b>1</b> No ethical/environmental fund links available <b>5</b> Ethical/environmental fund links available	<b>ESG Funds</b> <i>Environmental, social and governance fund links available</i> <b>1</b> No ESG fund links available <b>5</b> ESG fund links available
<b>Unit Trusts/OEICs</b> <i>Unit Trusts/OEICs available within this product</i> <b>1</b> Investment in unit trusts/OEICs is not accepted <b>5</b> Investment in unit trusts/OEICs is accepted	<b>Funds Non-UK</b> <i>Offshore Funds available within this product</i> <b>1</b> Investment in offshore funds is not accepted <b>5</b> Investment in offshore funds is accepted
<b>ETFs Available</b> <i>Exchange Traded Funds available</i>	<b>Investment Trusts</b> <i>Investment Trusts available within this product</i>

<b>1</b> ETFs not accepted <b>4</b> Either UK or non-UK ETFs accepted <b>5</b> Both UK and non-UK ETFs accepted	<b>1</b> Investment in investment trusts is not accepted <b>5</b> Investment in investment trusts is accepted
<b>Income Options Available</b> <i>Income payable as a % of current value, a fixed sum (or % of initial value), or as natural income</i> <b>1</b> One income option available <b>3</b> Two income options available <b>5</b> All three income options available	<b>Auto Portfolio Rebalancing</b> <i>Facility for portfolios to be automatically rebalanced</i> <b>1</b> Automated portfolio rebalancing not available <b>5</b> Automated portfolio rebalancing available

## Notes

KEY: na = not applicable, ns = not stated, nd = not disclosed

The Data Numerical Analysis (DNA) allows the analysis of data on both a quantitative and a qualitative basis, showing not only who does what, but more importantly, how well they do it. This is achieved by a system of benchmarking or ranking on a 1 to 5 basis called DNA. A score of 1 indicates a weak feature; a score of 5 indicates an excellent feature.

Source: Defaqto Matrix, data effective as of 02 January 2025 00:00

Produced on 02 January 2025

This report and the data it includes cannot be used, copied or otherwise distributed outside of the licensed user's organisation unless licensed to do so.

© Defaqto Limited 2025